

# Kiamichi Country



OKLAHOMA  
NATIVE  
AMERICA™

SOUTHEAST OKLAHOMA  
VISITORS GUIDE

# SPENDING TIME AWAY HAS NEVER ADDED UP TO SO MUCH.

## **Best Western Advantages:**

*40 hotels conveniently located throughout Oklahoma*

*Continental or hot breakfast*

*Fresh in-room coffee*

*Free high-speed internet access*

*Free local calls*

**WITH GOLD CROWN CLUB INTERNATIONAL, BUILD MEMORIES WHILE EARNING POINTS.**

Earn and redeem award points at any Best Western® worldwide. Join Gold Crown Club® International, our frequent-guest program – it's FREE, and every dollar you spend at any Best Western earns you points that can be redeemed for rooms at any of the 40 Best Western hotels in Oklahoma. So, the more you stay, the more you earn. Join the club today!

**1-800-338-8163**  
**bestwesternOklahoma.com**



### **Featured Oklahoma Locations**

#### **McAlester**

Best Western Inn of McAlester  
866-229-5139

#### **Poteau**

Best Western Traders Inn  
888-264-5838

### **Additional Oklahoma Locations**

Ada  
Altus  
Ardmore  
Atoka  
Bartlesville  
Blackwell  
Broken Arrow  
Chickasha  
Claremore

Durant  
Edmond  
El Reno  
Elk City  
Enid  
Glenpool (Tulsa Area)  
Grove  
Guthrie  
Lawton

Miami  
Oklahoma City (3)  
Oklahoma City Area (Moore)  
Okmulgee  
Owasso (Tulsa Area)  
Perry  
Sallisaw  
Sand Springs (Tulsa Area)

Stillwater  
Stroud  
Tahlequah  
Tulsa (3)  
Tulsa Area (Jenks)  
Weatherford  
West Siloam Springs  
Yukon (Oklahoma City Area)

Each Best Western hotel is independently owned and operated. Amenities vary at hotels. Call ahead for more information on specific amenities. High Speed Internet Access may not necessarily be available in all guest rooms or public areas. GCCCI is owned and operated by BW GCCCI, Inc., a wholly owned subsidiary of Best Western International, Inc. Best Western and the Best Western marks are service marks or registered service marks of Best Western International, Inc. ©2005, Best Western International Inc. All rights reserved.



## Kiamichi Technology Centers

*Now is the perfect  
time to start a career!*

*“We at Kiamichi believe everyone deserves having a marketable skill.”*

With a marketable skill you can either:



Antlers Campus

1. Enter the job market with an excellent wage or
2. Finance your way through college by working during the summer or on a part-time job during the year.

We train more auto mechanics, computer technicians, nurses and welders than anyone in the state. These are only a few of the courses we offer. See if we have a day-time program that fits your interest.



Atoka Campus

- Air Conditioning & Refrigeration
- Auto Collision
- Auto Service Technology
- Building & Grounds Maintenance
- Business & Computer Technology
- Carpentry
- Child Care
- Commercial & Home Services
- Computer Repair/Networking Technology
- Cosmetology
- Diesel Technology
- Drafting
- Electrical Trades
- Electronics
- Emergency Medical Technician
- Food Management
- Health Science Technology
- Information Services
- Masonry
- Occupational Services
- Practical Nursing
- Precision Machine Technology
- Retail & Consumer Technology
- Welding



McAlester Campus



Stigler Campus



Talihina Campus

*Visit one of our campuses at:*

Antlers	1-580-298-6354	McAlester	1-888-567-6630
Atoka	1-888-567-6645	Poteau	1-888-567-6632
Durant	1-888-567-6806	Spiro	1-888-567-6646
Hugo	1-888-567-6641	Stigler	1-888-567-6805
Idabel	1-888-567-6724	Talihina	1-888-567-6643

Financial Aid is Available for Those Who Qualify  
Administrative Office—Wilburton—1-888-567-6807

# Table of Contents

Antlers . . . . .	11
Broken Bow . . . . .	13
Choctaw Nation . . . . .	60
Choctaw County . . . . .	20
Events . . . . .	53
Golf . . . . .	43
Heavener . . . . .	19
Hunting & Fishing . . . . .	17
Information Directory . . . . .	57
Krebs . . . . .	29
Lakes . . . . .	27
Map . . . . .	32
McAlester . . . . .	31
McCurtain Co. . . . .	5
Memorials & Monuments . . . . .	52
National Forests & Wildlife Areas . . . . .	50
Poteau . . . . .	35
State Parks Chart . . . . .	51
Stigler . . . . .	39
Talihina . . . . .	41
Talimena Scenic Drive . . . . .	42
Valliant . . . . .	45
Wilburton . . . . .	47
Wilderness Area . . . . .	49

**Kiamichi Country, Inc.**  
Post Office Box 638  
Wilburton, OK 74578-0638  
(918) 465-2367 (800) 722-8180  
Fax (918) 465-3873  
[www.kiamichicountry.com](http://www.kiamichicountry.com)

The Kiamichi Country Visitors Guide is published by Kiamichi Country, Inc., as an informational guide for visitors, new residents and economic development decision makers. The guide is distributed to ten state travel information centers, chambers of commerce, visitor attractions and locations.

Copyright © 2006 by Kiamichi Country, Inc. Material and maps may not be copied or reproduced without written permission of Kiamichi Country, Inc. Travel guide designed and produced by Daniel Hubbard, Broken Bow, Okla. (580) 236-9181.

For additional free guides, please contact Kiamichi Country at the address and phone number above.

100,000 copies of this guide were produced at a cost of \$29 each.

Produced in cooperation with Oklahoma Tourism and Recreation Department and Kiamichi Country, Inc. For more information about Oklahoma call or write:

**Oklahoma Tourism and Recreation Department**  
Post Office Box 52002  
Oklahoma City, OK 73152-2002  
(800) 652-6552 or (405) 521-2409  
[www.travelok.com](http://www.travelok.com)

## Kiamichi Country, Inc. Board of Directors

### **Choctaw County**

Noel Pence, President  
Joe Webb, Secretary

### **LeFlore County**

Bonnie Prigmore  
Vanessa Richie

### **Pushmataha County**

Lisa Taylor, Vice-President  
Vera Nelson  
Arvel Jackson

### **Haskell County**

Margaret Johnson  
Jane Carolan

### **McCurtain County**

Charity O'Donnell  
Amber Settles

### **Executive Director**

Bill Grant

### **Latimer County**

Dr. Roy Vieux  
Cynthia Johnston, Treasurer  
Mary Ellen Mooney

### **Pittsburg County**

Dale Friestad  
Mary Helfenbein



*Come and Visit*

# *McCurtain County*

Home of...

Beavers Bend Resort Park

Broken Bow Lake

Pine Creek Lake

Mountain Fork River

Glover River



*For lodging and  
other information  
1.800.52-TREES ext. 52*

See Pages 12-16



# Welcome To Oklahoma's Kiamichi Country

**WE ARE AT YOUR SERVICE AND REPORTING FOR DUTY!**

We are here to serve you and your needs in every way possible. From the hills and valleys of our all terrain vacation land to our vast lakes and water ways we hope to be all things to you while you are with us.



We are the Great Choctaw Nation that came here in the early 1800's to guide and lead you through our splendor.



We are the wild geese that honk "hello" and "good-bye" as they travel through our land in spring and fall.

We are the ripples on the water as your boats and skis skip along in gracefulness.

We are the smoke from your camp fires as we warm your bodies and send the aroma of frying bacon into the air.

We are the museums that display our artifacts of ancient history.

We are the dining and lodging facilities that serve your needs of existence.

We are the many miles of high ways and byways that carry you through our magnificent country side.



We are the National Talimena Scenic Drive and it's little brother, Cavanal Hill, the world's highest, stopping at 1999 feet above sea level that takes you into the clouds and back down to our valleys of adventure.

We are the Indian dancers and pow wows that thrill you and teach you of our culture.



We are the rodeos and festivals that entertain you and the schools and churches that educate you and bring solace to your souls.

We are the hiking and equestrian trails that take you through our country side and the fish that leap from the water to grab your lures.

We are the wildlife that beckons and calls and the "Deer Capital Of The World" that makes your life a richer experience.

We are the gaming tables and the fast horses that make your blood race with excitement and the Buffalo, Long horns, and exotic breeds of cattle that graze on our seas of grass.

We are the great forests of pine, oak and cedar that grow to enhance our beauty and serve the needs of our nation.

We are the largest circus and the largest herd of elephants in the world that travels on wheels.

We are one of the few wild animal breeding farms in America with elephant families on display year round.

We are world champion cowboys and cowgirls commemorated in our cemeteries.



We are health care facilities that we call on from time to time to serve our needs.



We are the caddies that carry your golf clubs to some of the most unique courses in the Southeast Region

We take great pride in serving you and hope that you will return often and be a part of us here in our southeast region.

We are Kiamichi Country!

Sincerely,

*Bill Grant*

## **Antlers MotorSports**

"Where Fun is Part of the Deal!"

216 W. Main  
Antlers, OK 74523  
580-298-3379

[www.antlersmotorsports.com](http://www.antlersmotorsports.com)



**We Rent ATV's**

## **Fudge Station**

Located in Downtown Antlers, OK



Fudge made fresh daily with cream and butter

25 flavors, specialty items,  
gift baskets, Icecream

[www.fudgestation.com](http://www.fudgestation.com)  
1-800-801-2482

## **Little Cedar Cabin**

Come stay in our country getaway cabin  
with rustic styling.

Close to hunting, fishing, golfing, casinos  
& festivals!!

Sleeps 6, modest kitchen, TV, firepit &  
etc. Reasonable rates!

Just off Hwy 271 N. of Antlers, Ok. Call  
580-298-3789 or 580-271-0187  
[www.littlecedarcabin.com](http://www.littlecedarcabin.com)

## **John H. Cocke**

### **Real Estate, L.L.C.**

*"YOUR FARM, RANCH AND  
RECREATIONAL PROPERTY  
SPECIALIST IN SE OKLAHOMA  
SINCE 1969"*

[WWW.OKLACOUNTRYLAND.COM](http://WWW.OKLACOUNTRYLAND.COM)

209 E. MAIN ST. (580) 298-3347  
ANTLERS, OK 74523 (580) 298-2305

OKLACOUNTRYLAND@SBCGLOBAL.NET

## **Betsy's Quilts** Quality Fabric Shop

Hours M-F 9-6pm

Sat 9-4pm

(580) 298-5821

Toll Free

1-888-817-5821

Located 3 miles East of Antlers

## **Burger Barn**

Home of the Big Buck Burger

BURGER BARN

OPEN

Dine In - Carry Out - Free Delivery

407 W. Main St.  
Antlers, OK 74523  
580-298-5600

# DEER FESTIVAL

ANTLERS,  
OKLAHOMA

## & Outdoor Show



**Free Admission**

**Live Music**



**Mountain  
Man Village**

**Deer Camp  
Chili Cookoffs**



**Family Fun!**

**Cutest Kid in  
Camo Contest**

**Arts & Crafts, Hunting & Fishing Equipment, Chainsaw Carving Contest**

*October 6-7, 2006 - Fri-Sat. 9AM-7PM  
Antlers Fairgrounds - Antlers, Oklahoma*

[www.deerfestival.com](http://www.deerfestival.com)

# Antlers

Pushmataha County



226 NORTH HIGH STREET  
ANTLERS, OKLAHOMA  
580-298-5511  
[www.highstreetpizza.com](http://www.highstreetpizza.com)

## Clayton Lake Cabins

Fully furnished • Fireplaces • Lakefront  
Clayton Lake State Park  
5 miles south of Clayton, OK  
on HWY 271  
Fishing dock • Boat ramps  
Swimming area • Playgrounds  
26 RV camping sites and  
60 primitive camping sites  
(918) 569-7981  
[www.littledixie.org](http://www.littledixie.org)

## Clayton Country Inn

*Lodging and Dining at its finest*



Large Guest Rooms • Cottages w/Fireplaces  
RV Hookups  
1.4 Miles South of Clayton, OK  
on Hwy. #271  
Kiamichi Mountain Country  
918.569.4165 - [claytoncountryinn.com](http://claytoncountryinn.com)

**PRUETT'S FOOD**

Antlers • Broken Bow

*Pruett's Food*



# Antlers



Travelers to Antlers, Oklahoma find themselves in the heart of the "DEER CAPITAL of the WORLD", where families, sportsmen and travelers can visit unique sights and events, such as the live Whitetail and Fallow Deer exhibits and attend the fun-filled Deer Festival & Outdoor Show, held the first weekend in October.

Antlers, established in 1903 and nestled in the foothills of the Kiamichi Mountains, is home to the historic Frisco Depot and Museum. The Pushmataha County Historical Society welcomes guest and visitors

to tour the museum located in the historic depot.

While in Antlers, visitors can float the scenic Kiamichi River, spend the day 4-wheeling in the Kiamichi Mountains and relax in the numerous fully equipped guest cabins in the area.

Chamber of Commerce  
212 North High Street  
Antlers, Oklahoma 74523  
(580) 298-2488  
[www.antlerschamber.com](http://www.antlerschamber.com)



# Broken Bow

McCurtain County



Double Jacuzzis  
Cozy Fireplaces  
Mountain Bikes and  
Canoes included  
Fishing & Hiking

*Rivers Edge*  
COTTAGES

[www.RiversEdgeCottages.com](http://www.RiversEdgeCottages.com)  
(580) 244-7296

Located on Hwy. 4 east of Smithville  
38 miles north of Broken Bow

## Beavers Bend Getaways



Hwy 259 near  
Broken Bow Lake  
and  
Beavers Bend Resort Park

Private Luxury Cabins  
Hot Tubs  
Cozy Fireplaces  
Mountain Bike Rentals

580-494-6116

[www.BeaversBendGetaways.com](http://www.BeaversBendGetaways.com)

## Cedar Creek Cabin Rentals at Broken Bow Lake, Ok.



Classic Cabin Getaways in  
the heart of the Broken  
Bow Lake recreation area.

1 mile to lake

Call Toll Free

1-888-93-CABIN

[www.brokenbowcabinrentals.com](http://www.brokenbowcabinrentals.com)

## BEAVERS BEND MARINA



- Jet Ski Rentals
- Boat Rentals
- New Boats
- House Boat Rentals

1-580-494-6455

[www.beaversbendmarina.com](http://www.beaversbendmarina.com) marina@beaversbendmarina.com

## Whip-Poor-Will Resort Log Cabins Fudge Factory & Gift Shop

HC 75, BOX 38  
BROKEN BOW  
OK 74728

(580) 494-6476



[www.okresort.com](http://www.okresort.com)  
whiperwil@pine-net.com

1-4 Bedrooms • Pet Friendly • Hot Tubs  
Big Screen TV's • Open Year Round

1.888.494.6639



Near...  
Beavers Bend State Park  
Cedar Creek Golf Course  
Broken Bow Lake

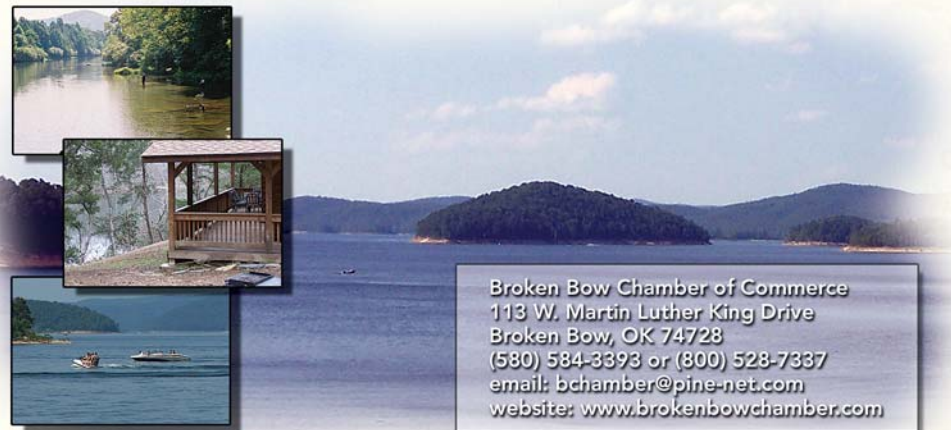
janetcross@pine-net.com  
[www.brokenbowlastresort.com](http://www.brokenbowlastresort.com)



Last Resort Cabins  
Broken Bow, Oklahoma



# Broken Bow



Broken Bow Chamber of Commerce  
113 W. Martin Luther King Drive  
Broken Bow, OK 74728  
(580) 584-3393 or (800) 528-7337  
email: [bchamber@pine-net.com](mailto:bchamber@pine-net.com)  
website: [www.brokenbowchamber.com](http://www.brokenbowchamber.com)

Broken Bow, located at the foothills of the Kiamichi Mountains and home of the ever popular Beavers Bend Resort Park, welcomes visitors from near and far to enjoy the natural resources that have made Broken Bow thrive. This scenic area known for its luscious green forests and abundance of clear water provides a fun-filled environment for many popular outdoor activities such as canoeing, boating, hiking, bird watching, golfing, scuba diving, hunting, mountain biking, camping, horseback riding, four wheeling, and all types of fishing. Broken Bow is the home to great fishing. We currently hold the State Record Brown Trout, at 17 pounds 4.64 ounces caught in Lower Mountain Fork River and the State Record for Large Mouth Bass, at 14 pounds 11.52 ounces caught in Broken Bow Lake.

Broken Bow Lake has 180 miles of shoreline; it is one of Oklahoma's most scenic lakes. Whether you're fishing for trout in streams that are stocked year round or canoeing the rapids of the Lower Mountain Fork, there is an outdoor activity suited for all ages and seasons.

Culture and history are plentiful in Broken Bow with three museums, each with its own unique subject to offer a rewarding learning experience.

The Gardner Mansion and Museum is well-known for their collection of pre-historic and historic Indian and Pioneer artifacts. The museum was originally a mansion built in 1884 for Jefferson Gardner who later went on to be the chief of the Choctaws Indians for several years. Also located outside the museum are the remains of a 2,000 year-old Cypress tree.

At the entrance to the Beavers Bend Resort Park lies the Beavers Bend Wildlife Museum. Not only does this museum feature wildlife exhibits but also environmental education, making it a true learning experience for all ages.

The Forest Heritage Center Museum is located within the Beavers Bend Resort Park. Through a series of 14 large dioramas, painted by famous Smokey Bear artist Harry Rossoll, visitors learn the important role forestry plays in their lives. The Forest Heritage Center also is home to another Harry Rossoll creation, Tree Bear, who was developed to encourage tree planting and spread the message "Good Things Come From Trees!" One of the museum's newest exhibits, "The People of the Forest," includes over 150 historic photographs illustrating early day logging in and around Broken Bow and the surrounding communities.

# Broken Bow

McCurtain County

## HOCHATOWN

*Junction Resorts*

PRIVATE CABIN RENTAL

Beautiful Cabins nestled in the woods. Fully equipped, fire-places, decks, Jacuzzis & hot tubs

- ★ Near 18-hole golf course ★
- ★ Blue Ribbon trout year round ★

On Hwy 259/Broken Bow Lake  
6 miles North of Broken Bow, OK

[www.beaversbendcabins.com](http://www.beaversbendcabins.com)



**1.800.550.6521**

**1.580.494.6521**

## THE CHARLES WESLEY MOTOR LODGE



50 Rooms Cable TV  
Pool • HBO  
Direct-Dial Phones

302 N. Park Drive • Broken Bow, OK  
(580) 584-3303

[www.charleswesleymotorlodge.com](http://www.charleswesleymotorlodge.com)

## Broken Bow Lake Cabins

Full-furnished luxury cabins  
Hot tubs  
Privacy  
Fireplaces  
Fire pits

Wide range of selection from  
couples to multi-family gatherings

Contact: 580-286-4471  
[www.brokenbowlakecabins.com](http://www.brokenbowlakecabins.com)  
e-mail: [brokenbowlakecabins@hotmail.com](mailto:brokenbowlakecabins@hotmail.com)

## Hochatown Hideaway

### Your McCurtain County Place to Hide

(405) 210-0354

[www.hochatownhideaway.com](http://www.hochatownhideaway.com)



# Broken Bow

## Kiamichi Cabins

8 mi. from Broken Bow  
located near Beavers  
Bend Resort Park and  
Broken Bow Lake.



queen beds

CHA

fireplace

decks

TV/VCR/CABLE

full kitchens

jacuzzies or hottubs

check out our web-site for

discounts, pictures and specials

**580-494-6152**

[www.kiamichicountrycabins.com](http://www.kiamichicountrycabins.com)

[beverlys@pine-net.com](mailto:beverlys@pine-net.com)

LOG and CEDAR

1, 2 bedroom, 2 story

sleeps up to 10 people

## Heartpine Hollow Cabins



*Within minutes of Broken Bow Lake & Beavers Bend Resort Park*

*When you stay at Heartpine Hollow Retreats,  
you will find more than just lodging.*

*We go that extra step to make your stay more  
memorable by adding a personal touch to  
our cabins. We strive to make our cabins  
your "Home away from Home"*

(580) 241-7895 or (580) 286-0833 (no calls after 9 pm)  
[kjblake@pine-net.com](mailto:kjblake@pine-net.com) [www.southeastokcabins.com](http://www.southeastokcabins.com)

## Tomichi Cabins



### 2-Story Log and Cedar Cabins

*Located near  
Broken Bow Lake  
and  
Beavers Bend Resort Park*

**580.584.7575**

[ashford@pine-net.com](mailto:ashford@pine-net.com)  
[tomichicabins.com](http://tomichicabins.com)

Queen Beds  
Stone Fireplace  
Large Deck  
Grill  
Full Kitchen  
TV/VCR/CABLE  
Hot Tubs

Rates \$155/day for up to 4 people,  
additional guest \$15/day per adult

Discount for  
longer stays

## Wilderness Lakefront Resort

**Absolute Peace and Serenity**

Moderately Priced - Fully Equipped  
8 Cabins - 4 Sizes - Canoes, Nature Trail  
Bring your ATV's

1/2 mile from a boat ramp  
Close to great hunting and fishing

Located on the North end of  
Broken Bow Lake

Call us at 888-677-3968

email: [centerswlr@yahoo.com](mailto:centerswlr@yahoo.com)

[www.wildernesslakefrontresort.com](http://www.wildernesslakefrontresort.com)

## "Welcome to our Guest Ranch in the Kiamichi Mountains"

*Luxury Cabins*

*Camp Sites w/full hook-ups*

*Lots of shaded parking!*

*Covered Stalls and Corrals*

*150 miles of well marked horse trails*

*Bring your horse or Rent one of ours*

*100's of miles of logging roads for ATV's*



**Guest  
Ranch**

(580)-244-3729

[www.AtoZguestranch.com](http://www.AtoZguestranch.com)

[atozguestranch@yahoo.com](mailto:atozguestranch@yahoo.com)

Open Year Around!

Check our web site for scheduled Organized Rides

## Museum of the Red River



Celebrating the artistic heritage of native Americans



Caddoan Ceramic Vessel, ca. 1400

### Museum Hours

Tuesday - Saturday 10 a.m. - 5 p.m.

Sunday 11 a.m. - 4 p.m.

Hwy 70, South Bypass at Hwy 259  
Idabel, OK 74745  
580/286-3616

[www.museumoftheredriver.org](http://www.museumoftheredriver.org)

## Beavers Bend Wildlife

### Museum & Cabins

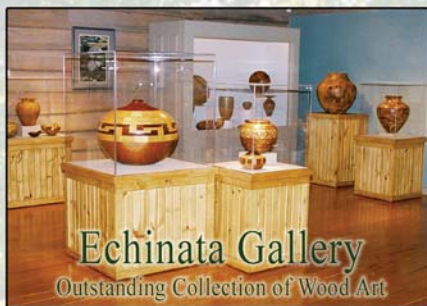


Entrance Beavers Bend Resort Park

Call for Group Rates

**580-494-6193**

[www.pine-net.com/nature](http://www.pine-net.com/nature)



### Echinata Gallery

Outstanding Collection of Wood Art

Open 365 days a year

(580) 494-6497

[FHC@Beaversbend.com](mailto:FHC@Beaversbend.com)

### Forest Heritage Center Museum Located in Beavers Bend

Feb. 27 - March 31	Woodturning Classes
March 5-May 5	8th Annual Spring Wood Art Exhibit
June 9-18	Owa-Chito Art Show
July	Camp Discover
Sept. 10- Oct. 22	8th Annual "Masters of Wood Art"
Nov. 10-12	Folk Festival & Craft Show

*enjoy the hunting  
and fishing...*

girl at lake wister photo courtesy of OK tourism department

**To find out more about the  
hunting and fishing areas in  
the Kiamichi Country call:**

**Oklahoma Dept. of Wildlife Conservation  
405-521-3851**

**Fishing Info 800-ASK-FISH (800) 275-3474**

**Hunting info 405-521-2730**

# FIRST NATIONAL BANK HEAVENER, OKLAHOMA



"A Tradition in Community Banking"

SINCE 1910

Main Office  
400 East First Street  
Heavener, OK 74937  
(918) 653-3200

**Visit the Peter Conser Home,  
The Rune Stone, Wister Lake  
Cedar Lake, Feed the Deer!**



West Side Branch  
602 West First Street  
Heavener, OK 74937  
(918) 653-3200

New Poteau Branch  
3104 North Broadway  
Heavener, OK 74953  
(918) 649-0649

## Southern Belle Restaurant



(An Authentic Antique Railroad Car)

• **Friday Night** •  
All You Can Eat  
Catfish \$6.95

• **Homemade Pies Daily** •

918.653.4458 • Hrs. 11 a.m.-9 p.m. • M-S  
Hwy. 59 N. Across From Green Country Inn  
Heavener, OK



**1-800-722-8180**

A Trust Authority of Local Governments

### Counties Served Programs Available

- Choctaw
- Haskell
- Latimer
- LeFlore
- McCurtain
- Pittsburg
- Pushmataha
- Economic Development
- Rural Economic Action Plan
- Area Agency on Aging
- Workforce Investment Act (WIA)
- Rural Fire Defense Program
- Tick Eradication Prog. Pushmataha Co.
- Rural Eco Development Coalition
- GIS/Geographic Information System

[www.keddo.com](http://www.keddo.com)



Heavener  
653-3088



## CENTRAL NATIONAL BANK

Member FDIC

- Pocoloa
- Poteau
- Stigler
- Heavener

[www.cnbpoteau.com](http://www.cnbpoteau.com)



# Heavener



Heavener, Oklahoma is known for its visitors — folks who came to this area of the country back in 1017 A.D. Vikings came to Heavener, wasn't much of a town then, and we doubt it had a stoplight.

All kidding aside, Heavener is the home to the Heavener Runestone State Park. In 1912, high on the side of Poteau Mountain, was discovered a large slab of Savannah sandstone (12 feet high, 10 feet wide and almost two feet thick) on which were deeply carved eight runic letters six to nine inches tall. Age, origin, meaning — are still matters of some controversy. It is believed by many, however, that they record the visit to this area of a Viking party in 1017. Beyond question is the beauty of the natural setting, now preserved by the state as a picnic area. Wildlife can often be seen wandering the area and nearby attractions are Cedar Lake, Lake Wister and the bustling little town of Heavener. In 1826 the town was renamed for Joseph Heavener, a local merchant, after the postal service disagreed with the original name, Choctaw City .

The state park also has hiking trails and there are abundant places for a picnic. The Talimena Scenic Byway, which just received their National Scenic Byway designation, is located 15 miles to the south.

The home of Peter Conser, a Choctaw leader of the Lighthorsemen law enforcement agency, is located 10 miles from Heavener off of Highway 59. The home contains artifacts from 1894-1920 and was renovated by the Oklahoma Historical Society after it was donated by Peter Conser's granddaughter, Mrs. Lewis Barnes in 1967.

## Heavener Chamber of Commerce

501 West First Street  
Heavener, OK 74937  
Phone: (918) 653-4303  
Fax: (918) 653-2438  
E-Mail: [heavenercofc@alltel.net](mailto:heavenercofc@alltel.net)  
Website: [www.heavenerok.org](http://www.heavenerok.org)



# See & Walk THE TRAIL OF TEARS

**Begin your Trail of Tears Tour...**

## *Ft Towson / Doaksville Historic Site and Museum...*



The Ft. Towson/Doaksville Historic Site and Museum boasts a most historic event with the surrender (as the war came to an end) of the last Confederate general, Stand Watie. Visitors can expect to see a newly-designed museum with artifacts from an 1830's steamboat being raised at a site nearby on the Red River. Doaksville was one of the most prominent commercial centers in the Choctaw Nation from the 1830's to the early 1900's.

## *Firing of the Cannon At Ft. Towson ..*

Approximately 150 miles of U.S. 70 reaching from the Arkansas state line to Madill, Oklahoma has been designated as the Choctaw/Chickasaw Heritage Corridor, which was part of the 1830's Trail of Tears.



**Come Fire the Cannon**

## *Chiefs House...*



Near the town of Swink sits a magnificently restored two-story log home dating to the 1830's and is traditionally referred to as the "Old Choctaw Chiefs House." It is the one of the oldest known houses of its kind in the state and is open by appointment only.

# That The Indians Walked in 1832 in CHOCTAW COUNTY



... Book your guided tour for groups of 10+  
for historic sites and points of interest by calling  
580.326.3060 or 580.326.7511



## *Showman's Rest*

...For more than 50 years, Hugo has been known among fans of the Big Top as Circus City, USA. It is the winter home of four circuses. Hugo's Mt. Olivet Cemetery is home to Showman's Rest, the final resting resting paice for "all the showmen under God's Big Top."

(Also buried nearby are World Champion Cowboys; Todd Whatley.....Freckles Brown.....Lane Frost)



## *Goodland Indian Orphanage*

... Southwest of Hugo is the famous Goodland Indian Orphanage, which started as a mission in 1838 and has been helping children continually to present day. A Church built in 1852 that served for 42 years as both school and church for the area is located on the campus..



## *Choctaw Casino - Grant*

.. Features blackjack and more reel games than every before, as well as dining and entertainment amenities that give players more value during their visit. With more games, more cash and more excitement, Choctaw Casino is now more fun than ever.



# Land of Festivals

**Did You Know That In Choctaw County You Could...**

## *... Rodeo Traditions*



Every fall in October, cowboys from across the nation come to, Hugo for one of the nation's largest open bullriding events the Freckles Brown Memorial BullRiding.

Also every summer in June the Hugo Horse and Rodeo Club host a Annual PRCA Rodeo. This event has been held for 43 years.

## *... Early Bird Bluegrass Festival*



Every 4th weekend in March (Fri & Sat)  
You can enjoy the Oldest Bluegrass Town  
west of the Mississippi.

## *...Balloons Over Hugo Festival*



Brought to you by the Women's Action League of Hugo, the third annual festival will be Oct. 20, 21, & 22, 2006.

It features live entertainment, great food, and fun for the entire family.  
This coincides with Oklahoma schools fall break, so plan on bringing the kids and spending the weekend in beautiful, scenic, historic Hugo.

# Land of Tours

## Did You Know That In Choctaw County You Could...

### ... RV Park & Historic Tours

Bring your RV to Circus City USA and visit our family RV Park and take the Frisco Depot RV Tour. Tours are available on Saturday by reservations of 10 or more. See the museum, fire the cannon, eat lunch at Circus City Diner, see the Elephants, and visit Showman's Rest



### ... Endangered Ark Foundation



Founded in 1993 the Endangered Ark Foundation was established to promote human involvement to enlarge the asian elephant breeding program, the Miller's herd located in Hugo, Oklahoma is the nucleus of this program.

### ...Babe Ruth Baseball

Hugo Oklahoma will once again host the 13 Year Old Babe Ruth Southwest Regional Baseball Tournament in 2007.

The Hugo Little League, Women's Action League and the Hugo Rotary Club will join together to welcome teams from Oklahoma, Louisiana, Arkansas, New Mexico, Texas and Mississippi. The tournament, which will take place in late July, will determine the team that will represent the Southwest region in the World Series. The event brings fans from around the country and gives Hugo the opportunity to showcase the beauty of the area.



# Hugo

Choctaw County

# Feco's

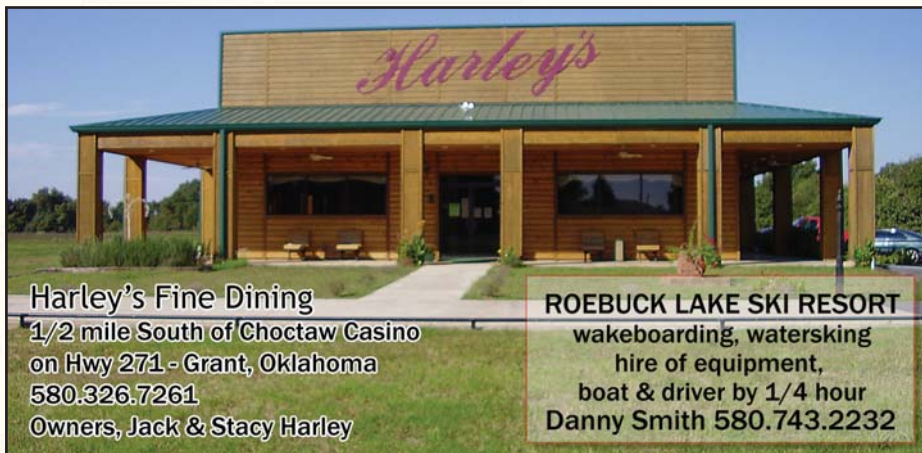
**DAILY BUFFET**

**Hugo, OK  
580-326-3722**

## Cedar Shed BAR-B-Q

### Steaks - Fish 580-326-7282

**RESTAURANT  
&  
CATERING**



### Harley's Fine Dining

1/2 mile South of Choctaw Casino  
on Hwy 271 - Grant, Oklahoma  
580.326.7261  
Owners, Jack & Stacy Harley

**ROEBUCK LAKE SKI RESORT**  
wakeboarding, waterskiing  
hire of equipment,  
boat & driver by 1/4 hour  
Danny Smith 580.743.2232



## HOLIDAY MOTEL

*Best Rates in Town Guaranteed*

Free HBO & local calls • Daily & Weekly Rates  
Guest Laundry Service • King Size Beds Available  
Smoking & Non-Smoking Rooms  
All Rooms Fridge & Micro • Truck & Boat Parking  
Gov't Commercial-AARP Rates  
New Remodeled Rooms • Group Rates Available

### JACUZZI ROOMS AVAILABLE

HC 69, BOX 74, Hugo, OK 74743  
1/2 Mile East of Wal-Mart  
580-326-6478 • Fax: 580-326-0610  
e-mail: gheewalaa@aol.com

**"Voted Best Motel"**

# village inn

610 W. Jackson  
Hugo, OK

Boat & Truck Parking \* Cable TV & HBO  
Pool \* Hi Speed Wireless Internet  
Great Home Cookin' Next Door



**(580) 326-3333**

[www.villageinn.citymax.com](http://www.villageinn.citymax.com)



# Hugo

**SECURITY** *First*  
NATIONAL BANK  
HUGO, OKLAHOMA

“Your Hometown Bank”

580-326-9641

www.sfnb.net

100 S. Broadway

and

Member  
FDIC

1907 E. Jackson



# HUGO LAKE STATE PARK

## MARINA AND SHIP STORE:

Slip and boat rentals; marine essentials; fuel, ice and beverages (580) 326-0303.



## LAKESIDE SITES

Raymond Gary State Park  
(580) 873-2307

Clayton Lake State Park  
(918) 569-7981

GROUP CAMPS at  
Beavers Bend State Park  
(580) 326-3351

# CABIN RENTALS

Lake Front  
Resort Cabins



and Primitive Cabins

FOR RESERVATIONS CALL (580) 326-0303



**Leeoma Caldwell**  
Real Estate

Specializing in residential,  
commercial, farm and ranch

580-326-7767  
224 E. Jackson  
Hugo, OK 74743  
caldwell@starnet.com

**BancFirst**  
**Loyal**

To Oklahoma & You.™

# TRI-COUNTY AUTOPLEX

**Chevrolet - Pontiac - GMC - Buick**

**SALES & SERVICE**

**MON - FRI 8AM TO 6PM**

**SAT SALES 8AM TO 5PM**

**SAT SERVICE 8AM TO 12 NOON**



THE RIGHT WAY. THE RIGHT CAR.

**1700 EAST JACKSON HUGO, OK**

**580-326-8335**

**www.tricountyautoplex.com**



**EagleMed**



Main Office

800.764.3343

Flight Dispatch

800.525.5220

*When Life's on the Line*

*We're in the Air...*

*A part of your community,  
and your team*

Coming to Hugo Spring 2006!...

YOUR Premier Emergency Air Ambulance

Memberships Available for You and Your Family

(Contact the main office for details)



# enjoy the water fun ...

When it comes to beautiful lakes, no one in Oklahoma, well for that matter, in the Midwest, can beat those found in Kiamichi Country, the southeast corner of Oklahoma. Big, blue-water lakes, Mountains, clear, fast-running streams, we have it all. Head on out to our Kiamichi Country water fun!

Broken Bow  
Broken Bow (580) 326-2366

Cedar  
Heavener (918) 653-2991

Eufaula  
Eufaula (918) 484-5135

Hugo  
Hugo (580) 326-3345

John Wells  
Stigler (918) 967-2164

Nanah Waiya  
Tuskahoma (918) 521-3721

Ozzie Cobb  
Rattan (580) 521-3721

Pine Creek  
Valliant (580) 933-4239

Raymond Gary  
Fort Towson (580) 873-2307

Robert S. Kerr  
Keota (918) 775-4475

Roebuck  
Ord (580) 326-7511

Sardis  
Clayton (918) 569-4637

Wister  
Wister (918) 655-7756

## Marinas

Beavers Bend  
(Broken Bow Lake)  
Broken Bow (580) 494-6455

Evergreen  
Enterprise (918) 799-6113

Hugo Lake  
Hugo (580) 326-0303

Keota Landing  
Keota (918) 775-4475

## Visit Beautiful Lake Eufaula!

Call for our Visitors Guide (918) 689-7751  
[www.lakeeufaulaassoc.org](http://www.lakeeufaulaassoc.org)



OKLAHOMA  
NATIVE AMERICA

TRAVELOK.COM



The Area's Finest Italian Cuisine **423-2662**

**HOMEMADE  
ITALIAN  
CUISINE**

*Gia Como's*  
Italian Cuisine

Known For Our Most Delicious Steaks • Lamb Fries • Italian Sausage  
Veal Parmigiana • Chicken Parmigiana • Shrimp Alfredo • Shrimp Scampi

Family Owned & Operated For Four Generations

*A Family Restaurant Since 1959*

19th & Commanche • Hwy 69 Bypass South • McAlester



*"Welcome to our house"*

OPEN DAILY 4:00 PM • SUNDAYS 12:00

BANQUET - LUNCHEON FACILITIES

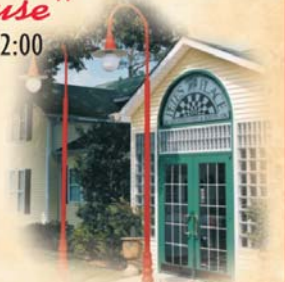
FOR UP TO 250 PEOPLE

1 Mile East of Highway 69  
on Highway 270 - Krebs, OK

**918 423-2042**

**www.petes.org**

*For three generations  
our family has taken great pride  
in serving fine, handcrafted **choc** beer.*



www.chocbeer.com

# Lovera's Family Grocery



**Famous For Our  
Italian Sausage &  
Homemade  
Hand-formed  
Italian Cheese**



PO Box 313, Krebs, Oklahoma 74554 • Order Line: 800-854-1417 • Fax: 918-426-5633  
iloveitalian.com



# Krebs



Fred Marvel



## Home of Fine Italian Dining



Krebs, Oklahoma is a century-plus old mining town that long lived on the mining of coal, but is best known today for its Italian restaurants. Settled in 1871 when the Missouri-Kansas-Texas Railroad first reached the area's rich coal veins - and named for Judge Edmond F. Krebs, a Choctaw - it reached its peak around the turn of the century. For a time its population approached 7,000, and an even dozen mines produced sufficient wealth to maintain two opera houses.

One of the Oklahoma's worst mine disasters occurred here January 7, 1892. An explosion caused by black-damp killed nearly 100 miners.

Also nearby is Oklahoma's largest lake, Lake Eufaula. The lake was created in 1964 with a 114-foot-high dam on the Canadian River just below the junction of its north and south branches. It sprawls octopus-like just north of the Krebs town ship and sports several state parks and shoreline parks.

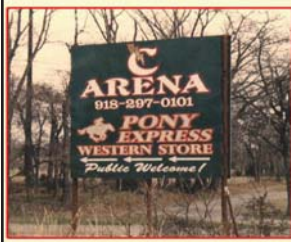


photo by Fred Marvel, Oklahoma Tourism & Rec. Dept



# McAlester

Pittsburg County



Rodeos  
Auctions  
Indoor Motocross  
Horse Shows  
Barrel Races  
Lessons  
Team Roping  
Calf Roping  
Private Parties  
Concerts

Lightning



RT4 BOX 272-1  
McAlester, Ok 74501  
(918) 297-0101

located 8 miles east of  
McAlester  
on Hi-Way 270

INDOOR ARENA 67,000 SQ. FT. UNDER ONE ROOF



**McAlester Area  
Chamber of Commerce  
& Agriculture**

P.O. Box 759 - McAlester, OK 74502

**(918) 423-2550**

[www.mcalester.org](http://www.mcalester.org)

**Pepsi Cola of McAlester, Inc.**  
1528 E. Electric Avenue  
McAlester, OK 74501 Ph 918-423-2360

**Call Us!** *The Meeting Place*  
918-426-6416  
*Restaurant/Catering*  
375 Seats Private Meeting Rms  
**Home of the BIG BUFFET**  
104 E Choctaw, Downtown  
McAlester, OK 74501  
Bus Parking

Oklahoma  
**PRISON  
RODEO**

For ticket info. and dates  
**1-800-879-2550**



# McAlester



## WALL OF MEMORIES



photo by Fred Marvel, Oklahoma Tourism & Rec. Dept

McAlester, the capital of Southeastern Oklahoma, is rich in history and offers many museums, memorials, and historical sites as well as antique shops galore. Among the historical attractions are the many early 1900s homes of McAlester's founding families - including the J. J. McAlester Home, the J. G. Puterbaugh Home, and the Tannehill Family Heirlooms and Gun Museum.

The downtown area offers many unique shops for your shopping experience. Also, explore the turn-of-the-century buildings, shops and atmosphere in McAlester's Old Town, as well as the annual Old Town Celebration (October).

In addition to the Oklahoma Prison Rodeo and the Italian Festival, many events are held annually and include the Southeast Arts & Crafts Show (Expo Center-Nov.) and the Country Friends Arts & Crafts Show (EXPO Center-April), both held at the Southeast EXPO Center and the Sanders Blue Grass Festival (June). The 3rd Annual McAlester Stars & Stripes Funfest (free to the public) will be held in conjunction with the annual fireworks display for the

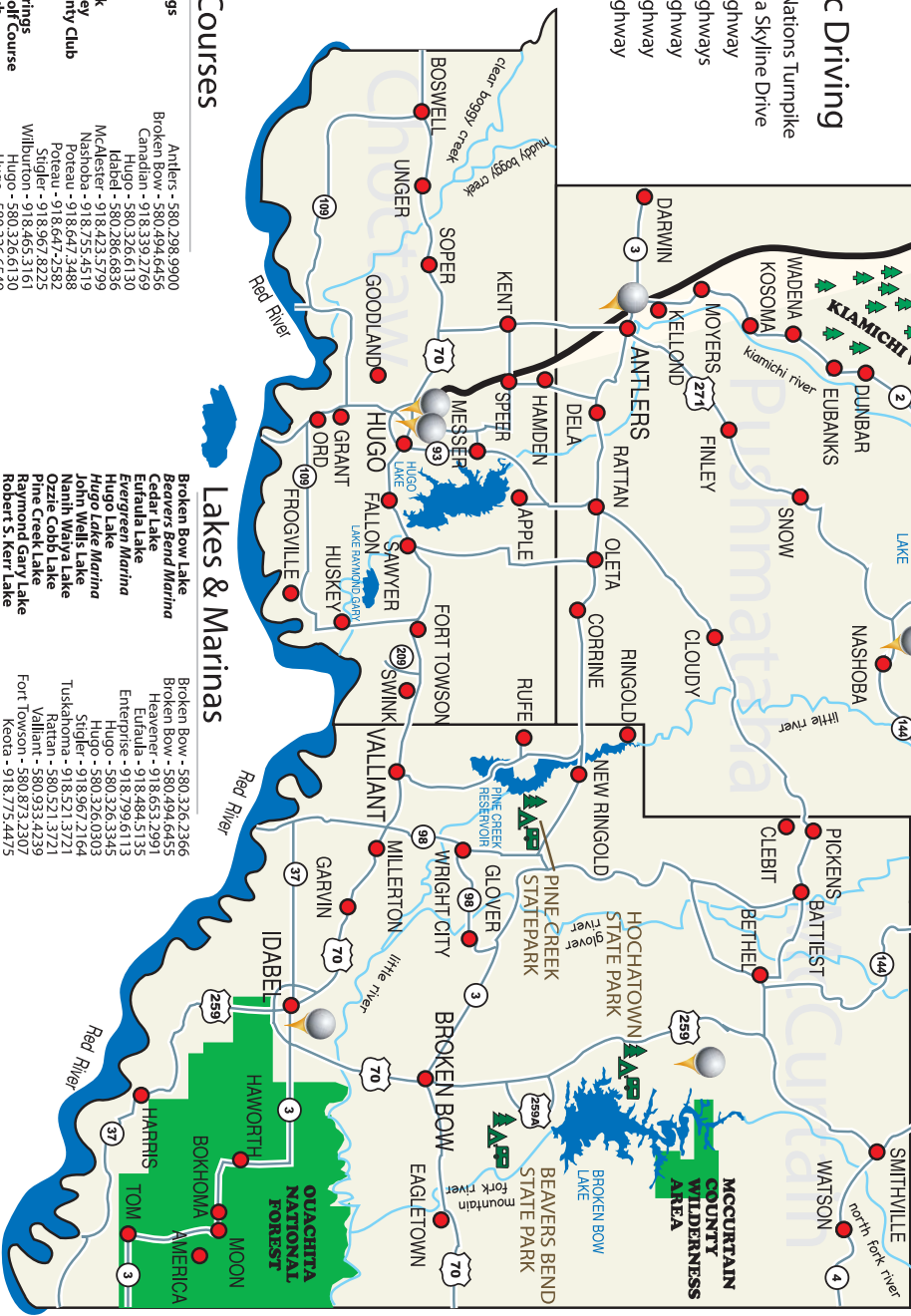
Independence Day Celebration to be held at the Southeast EXPO Center.

McAlester Tourism  
4500 W. Highway 270  
McAlester, Oklahoma 74501  
(918) 420-3976



# Scenic Driving

- 1 Indian Nations Turnpike
- 2 Tallmena Skyline Drive
- 3 State Highway
- 31 State Highways
- 32 State Highway
- 44 State Highway
- 37 State Highway



# Golf Courses

- Antlers Springs
- Cedar Creek
- Arrowhead
- Golf Club
- County Club
- Thundercreek
- Nashoba Valley
- Choctaw County Club
- Wolf Ridge
- Prater Creek
- Antlers Springs
- Sumner Golf Course
- Hugo Golf Club

- Antlers - 580.298.9900
- Broken Bow - 580.494.6456
- Cedar Creek - 580.326.6130
- Canadian - 918.339.2769
- Hugo - 580.326.6130
- Idabel - 580.286.6836
- McAlester - 918.423.5799
- Nashoba - 918.755.4519
- Poteau - 918.647.3488
- Poteau - 918.647.3488
- Stigler - 918.907.8225
- Sumner - 580.326.6130
- Widom - 580.326.6130
- Hugo - 580.326.6549

# Lakes & Marinas

- Broken Bow Lake
- Beavers Bend Marina
- Cedar Lake
- Eufaula Lake
- Hugo Lake
- Hugo Lake Marina
- John Wells Lake
- Nantah Wilya Lake
- Ozark Cobb Lake
- Pine Creek Lake
- Raymond Gary Lake
- Robert S. Kerr Lake
- Keota Marina
- Swetick Lake
- Wister Lake

- Broken Bow - 580.326.2366
- Beavers Bend Marina - 580.494.6455
- Heavenly - 918.653.2931
- Eufaula - 918.799.6113
- Emre - 580.326.3345
- Hugo - 580.326.6030
- Stigler - 918.967.2164
- Tuskahoma - 918.521.3721
- Rattan - 580.933.4239
- Valliant - 580.873.2307
- Fort Towson - 580.873.4475
- Keota - 918.775.9475
- Keota - 918.775.9475
- Clayton - 918.569.4637
- Wister - 918.655.7756



# Poteau

*The Mountain Gateway  
of Southeast Oklahoma*

Poteau Balloon Festival

Cavalan "The Worlds Highest Hill"

- Fascinating history
- Archeological park & mounds
- Runestone park
- Lake Wister
- Cedar Lake
- 220,000 acres national forest
- Mountain camping
- Lake & stream fishing
- In-season hunting
- Horseback riding
- Backpacking & hiking
- Boating & skiing
- Year-round scenic drives
- Antique shops, art galleries
- Historic museums
- Over 23 restaurants
- More than 300 motel rooms





# Poteau



PHOTO BY: WAYNE SHORT,  
POTEAU, OK

Poteau, home of Cavanal, the World's Highest Hill, personally invites you to join us for your vacation or just a weekend getaway. Stay in one of our many motel rooms and enjoy the beauty of Kiamichi Country. Spend the day fishing the streams and lakes or bring horses and go riding on nearby equestrian trails in the beautiful Ouachita Mountains. For 4X4 enthusiasts, call for information about some of the best rugged mountain trails in the U.S. If you want to just relax and shop you'll meet some of our 8,000 friendly people. At night, eat hardy at a quaint local restaurant or dine at any of the nationally known chain eateries.

You may want to visit the Kerr Conference Center and museum where you can see exhibits of the natural history of the area, including Indian artifacts; materials dealing with the famous Runestones; artifacts from the Spiro Mound complex; and articles used by Oklahoma and western pioneers in building the Indian Territory of the Great West.

Poteau, an Oklahoma Main Street Community, has activities for each season; a Bluegrass festival held the first weekend in May, our annual July 4th celebration held on July 4th, rain or shine; the PRCA Rodeo and Rodeo Festival Days held in September; the Poteau Balloon Festival held the latter part of October; then we wrap up the year with our Downtown Christmas celebration with Santa in the Park and the Christmas Parade the first Saturday in December. You won't want to miss "Christmas on the Island" at Lake Wister State Park December 2-25th where over 350,000 lights come alive on Quarry Island.

Check with us to see what's on the calendar before you come so you don't miss out on all the fun. Come and play with us, you'll be glad you did. See ya soon!

Poteau Chamber of Commerce  
200 South Broadway  
Poteau, OK 74953  
(918) 647-9178 [www.poteau.org](http://www.poteau.org)  
[poteaucofc@clnk.com](mailto:poteaucofc@clnk.com)

# Poteau


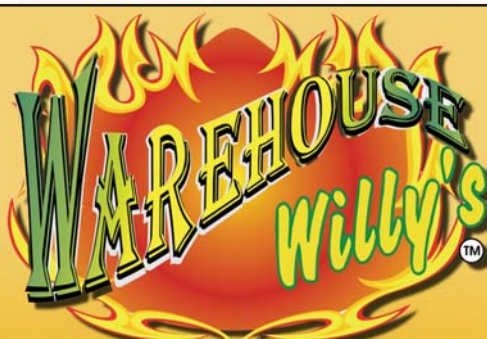
Le Flore County



Banquet Room, Lakeside Deck, Pavillion,  
Honeymoon Cabin, One & Two Bdrm. Cabins  
Private Fishing Trips, Retreats, Reunions,  
Meetings, and Parties

35740 U.S. Hwy. 59  
Poteau, Ok. 74953

www.longlakeresort.com • 918.647.8140 • longlakeresortllc@yahoo.com



**“A Warehouse of Great Food”**  
918-649-3400 • 300 Dewey

- Jacuzzi
- Honeymoon Suites
- Connecting Suites & Rooms
- Large Conference & Meeting Rooms
- FREE high speed DSL & Wireless
- Fitness Center
- Gift Shop
- Free Daybreak Breakfast
- Data Port, Micro/Fridge, Coffee Makers & Hairdryers in every room
- Outdoor Pool & Hot Tub
- Several Fine Restaurants Nearby



Satellite TV including  
free **HBO**

**Award Winning**

**DAYS INN & SUITES** 1702 N. Broadway - Poteau, Ok (918) 647-3510



# Poteau



FREE DELUXE  
CONTINENTAL BREAKFAST  
FREE HI-SPEED INTERNET IN  
ALL ROOMS  
BUSINESS PLUS ROOMS  
CABLE TV W/HBO  
IN-ROOM COFFEE MAKERS  
MICRO/FRIDGE, HAIRDRYER  
IRONBOARD, DATA PORTS  
JACUZZI SUITES  
OUTDOOR POOL  
MEETING ROOM



Poteau, Oklahoma  
Local 918-647-4001  
1-888-264-5838

*HWY 271 & 112  
JUNCTION*

## Bud's Country Junction

Fabulous Burgers • Ground Fresh Daily  
918-647-8147

59\$ across from Carl Albert State College

**RV Park & Hookups**

[www.budscountryjctandrmpark.com](http://www.budscountryjctandrmpark.com)



### *Stigler History*

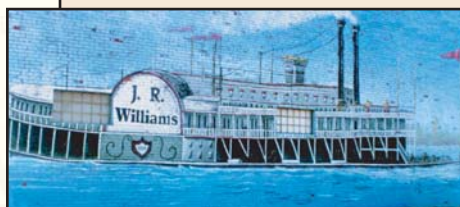
See the historic home of Green McCurtain, the last principal chief of the Choctaws prior to statehood, located near Kinta,

also home to the historic Old Sans Bois Cemetery. Visit the Haskell County Historical Society Museum in Stigler where you will uncover all kinds of interesting history.

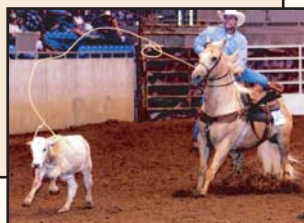
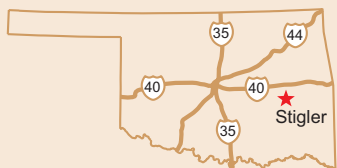
Notorious outlaw Belle Starr and her husband Tom, both died by the gun in Haskell County. Belle in an ambush at Hoyt just 16 miles northwest of Stigler and Tom in a hail of bullets at Whitefield, six miles west of Stigler on OK 9.



Explore the Civil War battle site at Tamaha where Confederate soldiers captured the Union steamboat, the "J.R. Williams."



Tamaha, located 18 miles northeast of Stigler, is home to two national historic sites, its 1880s jailhouse and the nearby ferry boat landing.





# Stigler



## LAND BETWEEN TWO LAKES



Stigler, the land between two lakes is a prime Oklahoma and Kiamichi Country tourist attraction. Stigler tourism and business is booming! Lake Eufaula, one of the largest lakes in the U.S., lies less than 20 miles to the west, while Robert S. Kerr Lake is just a few miles northeast of town. Stigler proper even has its own blue-water lake, Lake John Wells, it's very popular for fishing, swimming and boating. A favorite in town is the challenging Brier Creek Golf Course.

Fall is a particularly beautiful time to go to Stigler, for there are mountains galore just to the south, including the nationally famous Talimena Skyline Drive (a National Scenic Byway). Drive across the tops of mountains rather than through them! Fall brings out incredible shows of red, yellow and orange.

Complete your Stigler stay with some of the best small-town festivals in Oklahoma, events such as the

ever-growing Reunion Weekend (mid-June), with wonderful home-made ice cream, lots of crafts and artist displays or the PeeWee Rodeo, late June, the Roundup Club Rodeo (early August), the Christmas Parade (first weekend in December) and the Fall Festival Car Show (late October). The car show brings in dozens of vintage and classic cars. Watching them rumble down Main Street, bumper to bumper red and yellow, with a bowl of ice cream in your hands, is quite the site.

Saddle up your life preserver, hitch up your boat, load up the camera and head to Stigler, Oklahoma, the land between two lakes!

The Stigler-Haskell County Chamber of Commerce  
204 East Main  
Stigler, Oklahoma 74462  
(918) 967-8681  
[www.stiglerchamber.org](http://www.stiglerchamber.org)  
E-mail: [chamber@tulsaconnect.net](mailto:chamber@tulsaconnect.net)

## Lazy R Inn

HBO, Coffee Pots, Tastefully Decorated,  
Exceptionally Clean & Comfortable  
1/4 mile South of Talihina on Hwy. 271  
Phone for Reservation 918-567-2162  
[www.talimenascenicdrive.com](http://www.talimenascenicdrive.com)

## KIAMICHI INN

**CABLE TV  
IN ROOM COFFEE  
EFFICIENCY APARTMENTS  
VISA • MC • AMEX • DISC**

504 DALLAS • TALIHINA, OK

**918.567.2243**

## LAWSON PHARMACY

R TALIHINA, OK

Film • Cards • Gifts  
Oklahoma  
& Local Souvenirs

**918-567-3111**

## Wild Horse Trail Camp

*Where Traditions Run Deep*

Hwy. 144—Follow the Wild Horse Signs  
(918) 755-4570 office  
(580) 244-3232 Residence • (580) 244-3003 fax  
Camping • RV Hookups • Cabins  
Bike Trails & 4-Wheeling • Horse Trails  
[www.wildhorsetrailcamp.com](http://www.wildhorsetrailcamp.com)

The Kiamichi Sportsman llc  
800 Dallas Street  
Talihina, OK 74571  
918-567-3140

**Sporting Goods for All  
Your Needs !**

**Hunting, Rifles, Pistols, ATV, and  
Camping Supplies,  
Fishing and More !**

Tue-Sat 9.00 am. - 6.00 pm.  
J.J. and Deborah Townley

J-D  
Trail Riding

Jo & David Harrington  
Owners

28494 State Hwy 144  
Smithville, Ok 74957

[jharrington@j-dtrailriding.com](mailto:jharrington@j-dtrailriding.com)

**J-D TRAIL RIDING CAMP**  
580.244.7261  
[www.j-dtrailriding.com](http://www.j-dtrailriding.com)



# Talihina



The town of Talihina is known as Oklahoma's "Village Between the Mountains." It lies between the Winding Stair and the Kiamichi Mountains. However the community may be best known as the gateway to the Talimena Scenic Drive, America's National Scenic Byway and the Ouachita National Forest. The drive offers 54 miles of breathtaking scenery along the crest of the Winding Stair and Rich Mountains.

The Ouachita Trail begins at the Talimena State Park and ends near Perryville, Arkansas, making it a great trail to travel over an extended period of time. Primitive camping is allowed in the forest. Billy Creek Park and Winding Stair Campgrounds have campsites with a restroom at each. Cedar Lake has camping, RV sites, and bathhouses. Cedar Lake also offers an Equestrian Camp. The Lonesome L Ranch, A to Z Guest Ranch, Horse Heaven Ranch, Wild Horse Trail Camp & J-D Trail Riding Camp are

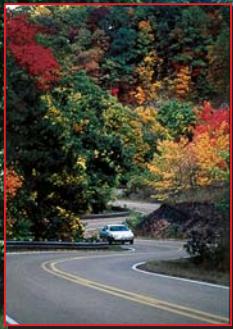
also great places for those who love to ride horses.

The Choctaw Nation Museum and Capitol Building, located just south of Talihina, is a great place to spend time visiting the past. Photography, hang gliding, hunting, fishing, and bird watching are but a few of the seasonal activities awaiting travelers to this region. Do not forget that we have the best fall foliage viewing in the region.

Talihina Chamber of Commerce  
900 Second Street  
Suite 12, Dept. 06  
Talihina, Oklahoma 74571  
(918) 567-3434  
[www.talihinacc.com](http://www.talihinacc.com)  
[chamber@talihinacc.com](mailto:chamber@talihinacc.com)



# TALIMENA SCENIC DRIVE



*On September 22, 2005 the  
Talimena Scenic Drive was  
designated a National Scenic Byway*

## Discover The Breathtaking Heights And Sights

The Talimena Scenic Drive is a gorgeous 54-mile route which spans one of the highest mountain ranges between the Appalachians and the Rockies. One breathtaking panorama follows another as this national forest scenic byway winds along the crests of forested peaks between Mena, Arkansas, and Tahihina, Oklahoma. Lodging is available along the route.

- **Visitor Information:** U.S. Forest Service West End Visitor Center, Tahihina, OK, and U.S. Forest Service East End Visitor Center, Mena, AR.
- **Picnicking:** Rich Mountain, Queen Wilhelmina State Park, Kerr Nature Center, Old Military Road, Horsethief Springs, Stateline Historical Monument and U.S. Forest Service East End Visitor Center. Restrooms at most sites.
- **Camping:** Winding Stair Campground at Emerald Vista, Cedar Lake, Queen Wilhelmina State Park and Billy Creek Campground.
- **Trails:** Ouachita National Recreation Trail, Billy Creek Trail, Cedar Lake Equestrian Trails, Horsethief Springs Trail, Boardstand Trail, Orchard Interpretive Trail, Earthquake Ridge Trail and Old Military Road Trail.



### Talimena Scenic Drive Association

900 2nd Street, Suite #12 • Tahihina, Oklahoma 74571  
(918) 567-3434 • Fax (918) 567-3388

[www.talimenascenicdrive.com](http://www.talimenascenicdrive.com)

*enjoy a round of golf...*

**Antlers Springs**  
Antlers (580) 298-9900

**Cedar Creek**  
Broken Bow (580) 494-6456

**Arrowhead**  
Canadian (918) 339-2769

**Golf Club**  
Hugo (580) 326-6130

**Rock Creek Golf Course**  
Hugo (580) 326-6130

**Hugo Golf Club**  
Hugo (580) 326-6549

**Country Club**  
Idabel (580) 286-6836

**Thundercreek**  
McAlester (918) 423-5799

**Nashoba Valley**  
Nashoba (918) 755-4519

**Choctaw Country Club**  
Poteau (918) 647-3488

**Wolf Ridge Country Club**  
Poteau (918) 647-2582

**Brier Creek**  
Stigler (918) 967-8225

**Sycamore Springs**  
Wilburton (918) 465-3161

Bring your golf clubs to Kiamichi Country—play in the early morning mist, surrounded by forests and mountains.

Play in the fall and be treated to a red-orange-and-yellow leaf show unlike any place in Oklahoma, all while you are just swinging your clubs!

**OKLAHOMA**  
**NATIVE AMERICA**

## First State Bank

*Your Home Owned Independent  
Full Service Bank  
ATM & Internet Banking*

(580) 933-4201



106 North Dalton  
Valliant, OK 74764



## VALLIANT CHAMBER OF COMMERCE



**(580) 933-5050**

valcham@valliant.net  
www.valliantchamber.org

16 North Dalton  
P.O. Box 396 Valliant, OK 74764

*sponsors the*

## Watermelon Festival & Garden Show

*“Celebrating our Agricultural History”*

**First Weekend in August**

- Free Watermelon by the Slice -

10:00 a.m. - Watermelon Parade

King & Queen Crowd Pleaser

Photography Show

Quilt Show

Farm & Garden Show

Lots of Music and Family Fun

Activities in the Park all day long!

***Bring your Lawn Chairs***



*We welcome you to the  
5th annual Watermelon  
Festival & Garden Show*

# J T F S

**John Tapley Forestry Services**

P.O. Box 1042 • Valliant, OK 74764

Home Phone: (580) 933-4941

Cell Phone: (580) 513-6166

Fax: (580) 933-5659

email: jtfs@valliant.net



## Weyerhaeuser

*The future is growing™*

www.weyerhaeuser.com

*“Banking For The Future” at*

## McCurtain County National Bank

**Valliant, OK 74764**

101 W. Wilson

(580) 933-7777

**Broken Bow, OK 74728**

20 North Park (580) 584-7741

Idabel, OK 74745

1501 SE Washington

(580) 286-6647

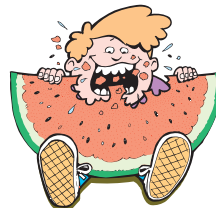


Equal Opportunity  
LENDER

www.mcnonline.com



## Town Of Valliant



*“Home  
of the  
Sweetest  
Watermelons  
in Oklahoma”*

111 North Dalton Street

**(580) 933-4556**

P.O. Box 714

Valliant, OK 74764



# Valliant



The Choctaw Nation's Salad Sisters



The King - TCB



2005 Watermelon Queens

The Town of Valliant was established in the early 1900's and was named for Frank W. Valliant, a chief engineer for the Arkansas and Choctaw Railroad. The town's birth was officially recorded on June 2, 1902. Of historical significance in the Valliant area is the Wheelock Academy and church which originated with a Christian mission established in 1832 after the arrival of the Choctaws over the Trail of Tears. Wheelock Academy welcomes visitors to the newly formed museum. Tradition holds that two black slaves, Wallace and Minerva Willis, first gave voice to Negro spirituals such as Swing Low, Sweet Chariot on a nearby plantation. Elliott Academy, founded in 1869 as a boarding school for children of former slaves (or Freedmen) was located just west of Valliant. State Hwy 98, North of Valliant leads to beautiful Pine Creek Reservoir on the Little River. Surrounded by the forested Kiamichi Mountains, Pine Creek offers great fishing, camping, picnicking, boating and swimming.

Valliant is home to one of the nation's largest containerboard mills built by Weyerhaeuser Company in 1971 on the western edge of Valliant. The \$100 million facility required an army of 2,800

men to construct and boasted the world's largest papermaking machine at the time. Today, the mill employs hundreds of workers on a nonstop, 365-day-a-year operation.

The Valliant Farmers Market is open May through August on Hwy. 70 and is the largest and most successful market in S.E. Oklahoma. The market features homegrown cantaloupes, watermelons and all other seasonal fresh produce and is a great place for local tourist information



Watermelon Overall King Contestant





Robbers Cave State Park and Wilburton go hand in hand, and never more so than on the third week-end in October every year when the park hosts the Robbers Cave Fall Festival. Our Fall Festival, one of the largest in the state, features three days of crafts booths, food booths, musical entertainment, and on Saturday, one of the largest car shows in the country.

Robbers Cave is also a great place for family fun, from hiking to rock climbing, swimming, picnicking, camping, and much more. There are cabins, RV spaces, and a lodge available.

## Calendar of Events – 2006

**April 29** – 4th Annual Starving Artist Show, Sale and Auction

**June 3** – Kiamichi Valley Flyer Model Airplane Fly-In

**August 12** – Magic Wheels Motorcycle Club Light Parade, Bikes and Bands on Main Street

**August 19** – Wilburton Main Street Benefit Golf Tournament

**September 23** – Downtown Bicycle Rodeo

**October 20, 21, 22** – 20th Annual Robbers Cave State Park Fall Festival

**December 2nd and 9th** – Santa Photos Downtown

**December 8** – Christmas Parade of Lights and Main Street Holiday Open House

*These are just the highlights! There are things happening all the time!*



## Fall Festival Committee

Box 533

Wilburton, OK 74578

918-465-3400





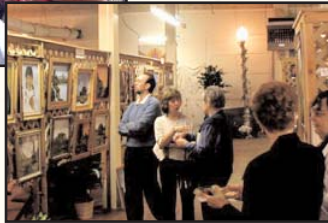
# Wilburton



Wilburton is nestled in a valley in the San Bois Mountains, just 5 miles south of Robbers Cave State Park. Make your first stop at the newly renovated Chamber of Commerce/Main Street Office, where information on local events is always available. Wilburton is a destination worth the drive, whether your interest is in shopping in our historic downtown shopping district or finding fun and safe activities for the kids. Wilburton and the surrounding area offer everything from hiking to

horseback riding, festivals to art shows, museums to wildflowers, bird-watching to golf.

Founded as a mining and railroad community in the late 1800's, incorporated as a city in 1902, Wilburton has a rich and diverse history that can be explored today with the help of our Latimer County Historical Society, located in the Latimer County Public Library. There are also geological digs in the area which regularly attract students and teachers from universities.





**Main Street**

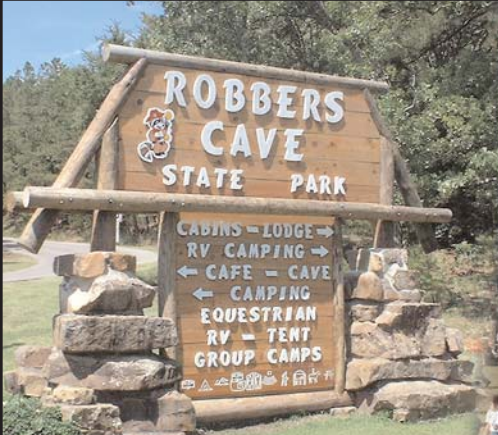
*Our future's looking great!*

Wilburton Main Street, Inc.  
P.O. Box 856  
Wilburton, OK  
918-465-2254  
wilburtondowntown@yahoo.com

Wilburton Chamber of Commerce  
302 W. Main St.  
Wilburton, OK  
918-465-3400

# Wilburton

Latimer County



**ROBBERS CAVE STATE PARK**

CABINS - LODGE →  
RV CAMPING →  
← CAFE - CAVE  
← CAMPING  
EQUESTRIAN  
RV - TENT  
GROUP CAMPS

12 Miles of Hiking Trails  
Excellent Birding  
Rapelling  
Wonderful Wildlife  
50 Miles of Horseback Trails  
Paddle Boats, Canoes  
Cabins/Lodge  
Camping  
Restuarants




**ZIP TRIP**

Open 24 hours  
Poteau & Wilburton

other locations in  
Howe, Shady Point, Spiro, Enterprise


Famous Fried Chicken; Hot Breakfast  
Great Service



**Eastern**  
oklahoma state college

Wilburton ♦ McAlester

918.465.2361  
www.eosc.edu



*A place for everyone*

**ROY'S  
CARDINAL  
FOOD STORE**

Deli • Pharmacy • Meat Market  
"THE STORE THAT SERVICE BUILT"

621 Highway 2 North  
Wilburton, OK 74578

**918.465.2452**  
Fax 918.465.2928

Joe & Brenda Coy, Owners

**Kiamichi Electric  
Cooperative, Inc.**



P.O. Box 340  
(Highway 2 South)  
Wilburton, OK  
74578

**918-465-2338**  
**1-800-888-2731** (toll free)

A Touchstone Energy™ Cooperative 

# wilderness areas

**Pushmataha**  
Clayton (918) 569-4329



**Little River**  
Broken Bow (580) 584-6211

**Honobia Creek**  
Honobia (405) 521-2730



**Ouachita National Forest**  
Idabel (580) 286-6564



**Ouachita National Forest**  
Talihina (918) 567-2326

# National Forest & Wildlife

## Kiamichi Country Wildlife Management Areas

Broken Bow	- N.E. of Broken Bow	Pine Creek	- N.W. of Broken Bow
Eufaula	- East of McAlester	Pushmataha	- South of Clayton
Gary Sherrer	- South of Hartshorne	Robbers Cave	- N.E. of Wilburton
Honobia	- S.E. of Clayton	Tiak	- S.E. of Idabel
Hugo	- N.E. of Hugo	Three Rivers	- North of Broken Bow
James Collins	- N.W. of Wilburton	Wister	- S.W. Poteau
Ouachita	- S.W. of Heavener	Yourman	- S.E. of Wilburton

	Acreage	Visitor Center	Camping	Restrooms	Showers	Picnic Area	Back Country Camping	RV Sites	Horse Trails	Foot Trails	Auto Tours	Biking	Hunting	Other Sports	Handicap Facilities
Little River NWR P.O. Box 340 Broken Bow, Ok 74728 580.564.6211	21,029						●				●	●	●		
Ouachita Natl. Forest 52175 US Hwy 59 Hodgen, Ok 74939-3145 918.653.2991	354,000	See Eight Areas Below Located in Ouachita National Forest													
Beech Creek Scenic & Botanical Area 918.653.2991	7,500		●				●			●			●		
Billy Creek Campground 918.653.2991	10		●	●		●			●	●		●			
Black Fort Mountain Wilderness 918.653.2991	5,149		●				●						●		
Cedar Lake Rec. Area & Equestrian Camp 918.653.2991	500		●	●	●	●		●	●	●		●			●
Kerr Nature Center 918.653.2991	160		●									●			●
Robert S Kerr Botanical Area 918.653.2991	8,026		●				●						●		
Upper Kiamichi River Wilderness 918.653.2991	10,819		●				●			●			●		
Winding Star Campground 918.653.2991	20		●	●	●	●				●		●			●

# State Parks & Resorts

	Acreage	Rooms	Cabins	Camp Sites	RV Sites	Picnic Tables	Showers	Grocery	Trails	Airstrip	Golf	Sports	Water Sports	Handicap Facilities
Arrowhead HC 67, Box 57 Canadian Ok 74425 918.339.2204	2,200			214	JXYZ	●	●	●	●	●	18	R	FMSW	●
Beavers Bend Resort P.O. Box 10 Broken Bow Ok 74728 580.494.6300	14,000	40	47	350	JXYZ	●	●	●	●		18	HVRT	DFMNRS	●
Hochatown near Broken Bow 580.494.6452				150	XYZ	●	●	●	●					●
Clayton Lake Rt1, Box 33-10 Clayton, Ok 74536 918.569.7981	550			70	XYZ	●	●						FMNSW	●
Heavener-Runestone Rt. 1 Box 1510 Heavener, Ok 74937 918.653.2241	50 Day Use Only					●			●			P		●
Lake Wister Rt. 2, Box 70 Wister, Ok 74966 918.655.7756 918.655.7212	7,000		15	200	JYZ	●	●	●	●			BHGTV	FMNSW	●
Raymond Gary HC65, Box 127 Fort Townson, Ok 74735 580.873.2307	46			105	JYZ	●	●					P	FNS	●
Robbers Cave P.O. Box 9 Wilburton, Ok 74578 918.465.2565	9,800	20	26	106	JXYZ	●	●	●	●			BPHREGV	FMNS	●
Talimena P.O. Box 318 Talihina, Ok 74571 918.567.2052	20			25	YZ	●	●		●			P		●
Hugo Lake State Park 580.326.0303			22				●							●

B=Ballparks E=Equestrian Camp F=Fishing G=Golf H=Horseshoes M=Motorized Boating N=Non-Motorized Boating  
P=Playground R=Riding Stable S=Swimming T=Tennis V=Volleyball W=Water-Skiing Scuba Diving

X=Reserved Sites Y=Water Codes Z=Electric J=Some w/Sewer

# Memorials & Monuments



## Three Sticks Monument

Big Cedar (918) 567-2326

## John F. Kennedy Memorial

Big Cedar

## Indian Memorial

Broken Bow (580) 584-6531

## Showman's Rest (Cemetery)

Hugo (580) 326-7511

## Carl Albert Memorial

McAlester (918) 423-2550

## Coal Miner's Memorial

McAlester (918) 423-2550

## God's Little Angel Memorial

McAlester (918) 423-2550

## Veteran's Memorial

Valliant (580) 933-5050

## Clearcreek Watermill Monument (Hwy 70)

Valliant (580) 933-5050

## Elliott Academy Monument (Hwy 70)

Valliant (580) 933-5050

## Memorial Markers

### Alikchi Court Ground, Garland Cemetery

Alikchi—Hwy. 3

### Military Trace

Broken Bow—Hwy. 259

### Gardner Mansion—Choctaw Chiefs Jefferson Gardner, George Hudson, and Peter Pitchlynn

Eagletown—Hwy. 70

### Cedar Lake/CCC Memorial

Holson Valley Rd.—Hwy. 70

### Miller Court House, Shawnee Town

Idabel

### Whelock Mission/Academy

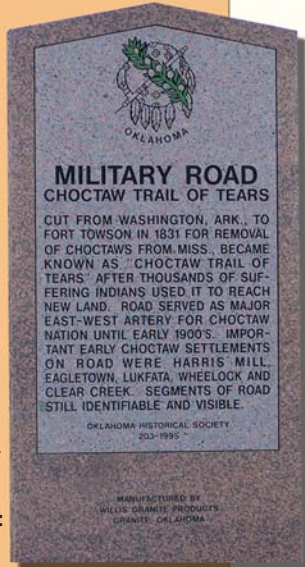
Millerton—Hwy. 70

### Fulsom Training School, Beavers Bend, CCC Marker

Smithville—Hwy. 259N

### Garland Cemetery, Harris House & Pecan Point

Tom—Hwy. 259S



# Kiamichi Country Events

## January

### *Haskell County*

Women's Biz 918-967-8681 (Stigler)

### *LeFlore County*

Easter Egg Hunt,  
Heavener-Runestone State Park  
918-653-2241 (Heavener)

### *Pushmataha County*

Chamber Banquet  
580-298-2488 (Antlers)

4-H Share the Fun  
580- 298-5563 (OSU Office)

## February

### *Haskell County*

Sweetheart Banquet with the  
Community Choir  
918-967-8681 (Stigler)

### *McCurtain County*

Annual Broken Bow Chamber of  
Commerce Banquet  
580-584-3393 (Broken Bow)

### *Pittsburg County*

18th Annual Chocolate Festival  
918-423-6168 (McAlester)

Tony Deel Dance Convention  
918-420-3976 (McAlester Tourism)

OSSAA Basketball Playoffs  
918-420-3976 (McAlester Tourism)

### *Pushmataha County*

Push. Co. 4-H County Rally  
580- 298-5563 (OSU Office - Antlers)

## March

### *Choctaw County*

Choctaw County Livestock Show  
580-326-3359 (Hugo)

Kelly Miller Circus Opens in Hugo  
580-326-9229 (Hugo)

Carson & Barnes Circus Opens in  
Arlington 580-326-2233 (Hugo)

Bill Grants Early Bird Blue Grass  
Festival 580-326-5598 (Hugo)

### *LeFlore County*

Motorcycle Rally  
580-889-0457 (Talihina)

Spring Blossom Viewing  
918-567-3434 (Talihina)

### *McCurtain County*

Spring Livestock Show & Sale at the  
McCurtain County Fairgrounds  
580-286-3305 (Idabel)

Broken Bow Chamber of Commerce  
Bass Fishing Tournament  
580-584-3393 (Broken Bow)

Spring Wood Art Exhibit at the  
Forest Heritage Center  
580-494-6497 (Broken Bow)

### *Pittsburg County*

Pittsburg County Jr. Livestock Show  
918-423-4120 (McAlester)

OSSAA Basketball Playoffs  
918-420-3976 (McAlester Tourism)

Ducks Unlimited Auction & Dinner  
918-420-3976 (McAlester Tourism)

Nat'l Wild Turkey Fed.

Auction & Dinner  
918-420-3976  
(McAlester Tourism)

### *Pushmataha County*

Rattan Fat Stock Show  
580-587-2715 (Rattan)

Jr. Livestock Show  
580- 298-5563 (OSU/Antlers)

Miss RHS Pageant  
580-587-2715 (Rattan)

Early Bird Trail Ride  
918-569-4760 (Clayton)

## April

### *Choctaw County*

Spring Art Show at Frisco Depot  
Museum 580-326-6332 (Hugo)

Governor's Turkey Hunt  
580-326-7511 (Hugo)

### *Haskell County*

Concert, 918-967-8681 (Stigler)

Easter Egg Hunt  
918-967-8681 (Stigler)

Women's Biz  
918-967-8681 (Stigler)

Relay for Life 918-967-8681 (Stigler)

### *Latimer County*

Alumni/Homecoming  
918-465-2254 (Wilburton)

### *LeFlore County*

Spring Arts & Crafts Show  
918-653-4303 (Heavener)

Arbor Day Volleyball Tournament  
Talking Trees Campground  
918-653-2187(Heavener)

Spring Blossom Viewing  
918-567-3434 (Talihina)

Indian Festival Pow Wow  
918-567-2539 (Talihina)

### *McCurtain County*

Dogwood Days Festival hosted by  
the Idabel Chamber of Commerce  
580-286-3305 (Idabel)

Kids Fishing Day Camp  
hosted by the Broken Bow Chamber  
of Commerce 580-584-3393

Mountain Trail Riding in SE Oklahoma  
580-244-3729 (Smithville)

### *Pittsburg County*

Baby Fair  
918-420-3976 (McAlester Tourism)

Pittsburg County Home & Garden Show  
918-420-3976 (McAlester Tourism)

Armed Forces Day Celebration  
918-423-2550 (McAlester)

### *Pushmataha County*

April "Showers" Trail Ride  
918-569-4761 (Clayton)

Ride the Wildhorse Dogwood Trail  
Ride, 918-755-4570 (Nashoba)

Mens Rendevouz  
918-755-4570 (Nashoba)

## May

### *LeFlore County*

Multi-Cultural Spring Festival  
918-653-2217 (Heavener)

Wal-Mart Kids Fishing Derby,  
Talking Trees Campground  
918-653-2187 (Heavener)

Spring Fling Mountain Bikes,  
Talking Trees Campground  
918-653-2187 (Heavener)

Summer Nites Under Stars Band  
Concert, Talking Trees Campground  
918-653-2187 (Heavener)

Cavalan Hot Rod Cruise  
& Car Show  
918-647-2885 (Poteau)

Spring Fling  
918-647-8648 (Poteau)

Annual Memorial  
Day 4-Wheel Drive Run  
918-647-3510 (Poteau)

Spring Blossom Viewing  
918-567-3434 (Talihina)

Buffalo Mountain Flyers Hang Gliding  
918-567-3434 (Talihina)

# Kiamichi Country Events

Bar D Rodeo Champion Steer Wrestling  
918-567-3227 (Talihina)

## *McCurtain County*

The Choctaw Nation Long Walk  
800-522-6170 (Millerton)

Cool Cars and Crazy Cones  
hosted by Broken Bow Main Street  
580-584-2440 (Broken Bow)

Beavers Bend Rod Run hosted by the  
Kiamichi Street Rod Association  
580-584-2345 (Broken Bow)

Max Valdez Benefit Fishing Tournament  
hosted by the Tri-Lakes Bass Club  
(Broken Bow)

McCurtain County Fairboard Rodeo  
580-286-3305 (Idabel)

Kiamichi Independent Bikers  
Association Rally  
580-584-2185 (Idabel)

Mountain Trail Riding in SE Oklahoma  
580-244-3729 (Smithville)

8th Annual Memorial Day Ride,  
580-244-3729 (Smithville)

## *Pittsburg County*

Armed Forces Day Celebration  
918-423-2550 (McAlester)

Blues Festival  
918-420-3976 (McAlester Tourism)

National Scrapbooking Day  
(EXPO Center)  
918-429-0569 (McAlester)

Memorial Day Antique Show & Flea  
Market Old Town Area,  
918-423-8620 (McAlester)

Italian Festival (2 days)  
McAlester & Krebs  
918-423-2550 &  
918-420-3976 (McAlester Tourism)

## *Pushmataha County*

Memorial Day Golf Tour.  
580-298-9900 (Antlers)

Rattan FFA Banquet  
580-587-2715 (Rattan)

Rattan Big Bass Tour.  
580-587-2395 (Rattan)

Ride the Wildhorse Memorial Day  
Trail Ride 918-755-4570 (Nashoba)

## June

### *Choctaw County*

Hugo Homecoming & Fire Truck  
Parade 580-326-7511 (Hugo)

PRCA Rodeo 580-317-9411 (Hugo)

Ft Towson Homecoming  
580-873-2628 (Ft Towson)

Boswell Homecoming  
580-566-2211 (Boswell)

Ranch Horse Competition & Auction  
271-0358 (Hugo)

### *Haskell County*

Stigler Reunion Days, Arts and  
Crafts, Food Booths, Carnival,  
Musical Entertainment and more  
918-967-8681 (Stigler)

### *Latimer County*

Model Airplane Fly-in  
918-465-2254 (Wilburton)

CCRA Rodeo  
918-465-2254 (Wilburton)

### *LeFlore County*

59 Car Cruiser's Car Show  
Heavener-Runestone State Park  
918-653-2241 (Heavener)

Ouachita Trek for Hiking Clubs,  
Talking Trees Campground  
918-653-2187 (Heavener)

Summer Nites Band Concert  
Talking Trees Campground  
918-653-2187 (Heavener)

Open Volleyball Tournament  
Talking Trees Campground  
918-653-2187 (Heavener)

22nd Annual Quilt Show  
918-647-8231 (Poteau)  
Kiamichi Valley Frontier Days Rodeo  
918-567-3434 (Talihina)

DWMC Motorcycle Show & Parade  
918-567-3434 (Talihina)

### *McCurtain County*

Owa-Chito Festival of the Forest at  
Beavers Bend State Park  
580-584-3393 (Broken Bow)

Owa-Chito Art Show at Beavers Bend  
State Park 580-494-6497 (Broken Bow)  
Owa-Chito Golf Tournament at  
Beavers Bend State Park (Broken Bow)

Owa-Chito  
Bass Fishing Tournament at Broken  
Bow Lake (Broken Bow)

McCurtain County Relay for Life  
at Idabel Warrior Stadium  
580-286-7656 (Idabel)

Mountain Trail Riding in SE Oklahoma  
580-244-3729 (Smithville)

### *Pittsburg County*

29th Annual  
Sanders Blue Grass Festival (4 days)  
(McAlester) 918-423-4891  
& 918-420-3976  
(McAlester Tourism)

Junior Sunbelt Classic  
Baseball Classic (7 days)  
918-423-1589 (McAlester)

American Cancer Society's Relay for Life  
918-426-1098 (McAlester)

6th Annual Blue Mountain Cruzers  
Car & Truck Show  
918-297-131 (McAlester)

### *Pushmataha County*

Push. Co. Homecoming  
580-298-2488 (Antlers)

Summer Fun Trail Ride  
918-569-4761 (Clayton)

Youth Camp  
918-755-4570 (Nashoba)

## July

### *Choctaw County*

Relay for Life Walk  
580-326-6494 (Hugo)

Soper Homecoming  
580-345-2238 (Soper)

TJRA Rodeo  
@ Arena (Hugo)

### *Haskell County*

July 4th Celebration  
918-967-8681 (Stigler)

### *Latimer County*

Fireworks  
918-465-2254 (Wilburton)

UPRA Rodeo  
918-465-2254 (Wilburton)

### *LeFlore County*

Bicycle Road Tours  
Talking Trees Campground  
918-653-2187 (Heavener)

Summer Nites Band Concert  
Talking Trees Campground  
918-653-2187 (Heavener)

Celebrate America Country Style  
917-647-9178 (Poteau)

Buffalo Mountain Flyers Hang  
Gliders Compt.  
918-567-3434 (Talihina)

Veterans Center Fireworks  
918-567-2251 (Talihina)

# Kiamichi Country Events

## *McCurtain County*

Idabel Chamber of Commerce Golf Tournament 580-286-3305 (Idabel)

Fireworks Display at Warrior Stadium 580-286-7656 (Idabel)

Mountain Trail Riding in SE Oklahoma 580-244-3729 (Smithville)

Wright City Rodeo (Wright City)

## *Pittsburg County*

3rd Annual McAlester Stars & Stripes Funfest (includes fireworks) 918-420-3976 (McAlester Tourism)

Whole Hawg Days Summer Festival 918-689-2791 (McAlester)

Health Fair @ EXPO Center 918-420-3976 (McAlester)

Youth Explosion 918-420-3976 (McAlester Tourism)

Motorcycle Rally 918-420-3976 (McAlester Tourism)

## *Pushmataha County*

Push. Co. 4-H Camp 580-298-5563 (OSU/Antlers)

Clayton Homecoming 918-569-4135 (Clayton)

July 4th Trail Ride 918-569-4761 (Clayton)

## **August**

### *Choctaw County*

Trade Days @ Rodeo Arena 580-326-3359 (Hugo)

FFA Rodeo 580-326-3359 (Hugo)

### *Latimer County*

Magic Wheels 918-465-2254 (Wilburton)

### *LeFlore County*

Heavener Chamber of Commerce Rodeo 918-653-4303 (Heavener)

Talihina Round - Up Club Jr Rodeo 918-567-2871 (Talihina)

### *McCurtain County*

Valliant Watermelon Festival 580-933-5050 (Valliant)

Boys & Girls National Night Out hosted by McCurtain County Boys & Girls Club 580-584-2183 (Broken Bow)

## *Pittsburg County*

The World's Largest Behind the Walls Rodeo 67th Annual Outlaw Rodeo: Oklahoma State Prison 918-423-2550 (McAlester)

## *Pushmataha County*

Hotter'n Hell Golf Tour. 580-298-9900 (Antlers)

## **September**

### *Choctaw County*

Choctaw County Fair 580-326-3359 (Hugo)

Kiamichi Area Rod Run 580-326-7511 (Hugo)

### *Haskell County*

City Wide Garage Sale 918-967-8681 (Stigler)

### *LeFlore County*

Rodeo 918-653-4303 (Heavener)

Thunder Run Motorcycle Tour Talking Trees Campground 918-653-2187 (Heavener)

Deer Woods Hiking Camp Talking Trees Campground 918-653-2187 (Heavener)

Dog Daze Band Concert Talking Trees Campground 918-653-2187 (Heavener)

Annual Phil Gardenhire Memorial PRCR Rodeo/LeFlore County Fair/Livestock Show 918-649-5272 (Poteau)

Rodeo Days Festival 918-647-8648 (Poteau)

4th Annual Cavanal Hill Bike Climb 918-649-0330 (Poteau)

Buffalo Mountain Flyers Hang Gliding 918-567-3434 (Talihina)

Grand Prix Race, Dirt Bikes & 4 Wheelers 918-567-3434 (Talihina)

### *McCurtain County*

McCurtain County Free Fair at the Idabel Fair Grounds 580-286-3305 (Idabel)

Masters of Wood Art Exhibit at the Forest Heritage Center 580-494-6497 (Broken Bow)

9th Annual Labor Day Ride 580-244-3729 (Smithville)

Valliant Chamber Awards Banquet hosted by the Valliant Chamber of Commerce 580-933-5050 (Valliant)

## *Pittsburg County*

Outlaw Rodeo Parade & Celebration 918-423-2550 (McAlester)

Pittsburg County Free Fair 918-423-4120 (McAlester)

Shrine Circus 918-420-3976 (McAlester Tourism)

## *Pushmataha County*

Labor Day Golf Tour. 580-298-9900 (Antlers)

Push. County Fair 580-298-5563 (OSU/Antlers)

Rattan FFA Rodeo 580-587-2715 (Rattan)

Choctaw Nation Labor Day Festival 918-569-4465 (Tuskahoma)

## **October**

### *Choctaw County*

Freckles Brown Memorial Bull Ride 580-345-2423 (Hugo)

Balloon Festival 580-326-5633 (Hugo)

Doaksville Candle Light Tour 580-873-2634 (Dokesville)

### *Haskell County*

Fall Festival Car Show, Arts and Crafts and Carnival 918-967-8681 (Stigler)

### *Latimer County*

Robber's Cave Fall Festival 918-465-2254 (Wilburton)

Boo Parade 918-465-2254 (Wilburton)

### *LeFlore County*

Lions Club Street Carnival 918-653-4303 (Heavener)

Pumpkin Patch 918-653-2232 (Heavener)

Mountain Bike Fall Folly Talking Trees Campground 918-653-2187 (Heavener)

Peter Conser House Quilt Show 918-653-4303 (Near Heavener)

Poteau Balloonfest 918-647-3510 (Poteau)

# Kiamichi Country Events

Talihina Lion's Club Street Carnival,  
918-567-2326 (Talihina)

Christian Motorcycle Association  
Lunchon, 918-567-3434 (Talihina)

Fall Festival, Arts & Crafts,  
Food & Car Show  
918-567-3434 (Talihina)

## **McCurtain County**

Kiamichi Independent Bikers  
Association Rally 580-584-2185 (Idabel)

Fall Festival hosted by the Idabel  
Chamber of Commerce 580-286-3305

Halloween Train of Terror at  
Beavers Bend State Park  
580-494-6613 (Broken Bow)

Safe-N-Sane Halloween hosted by  
the Broken Bow Main Street  
580-584-2440 (Broken Bow)

Mountain Trail Riding in SE Oklahoma  
580-244-3729 (Smithville)

## **Pittsburg County**

62nd Annual Lion's Club  
Kids Fall Festival  
918-420-7269 (McAlester)

Annual Old Town Celebration  
McAlester 918-423-8620  
or 426-4040 & 918-420-3976

Choctaw Pre-Christmas Arts &  
Crafts Show 918-426-1743  
after 6 pm (McAlester)

Tony Deel Dance Convention 918-  
420-3976 (McAlester Tourism)

Toughman Contest  
918-420-3976 (McAlester Tourism)

## **Pushmataha County**

Deer Festival and Outdoor Show  
(580)298-3530 (Antlers)  
Spooky Goofy Golf Tour  
580-298-9900 (Antlers)

Excraftaganza Craft Fair  
580-298-5547 (Antlers)

Halloween Carnival  
580-298-2488 (Antlers)

Fall Encore Trail Ride,  
918-569-4761 (Clayton)

Honobia Big Foot Fall Festival  
580-244-3295 (Honobia)

Ride the Wildhorse Fall Foliage  
Trail Ride 918-755-4570 (Nashoba)

Rattan Halloween Carnival  
580-587-2715 (Rattan)

## **November**

### **Choctaw County**

Veterans Day Parade  
580-326-6316 (Hugo)

Annual Chamber Banquet  
580-326-7511 (Hugo)

### **Haskell County**

Christmas Tree Lighting Celebration,  
918-967-8681 (Stigler)

### **LeFlore County**

Heavener Arts & Crafts Fair & Car  
Show 918-653-4303 (Heavener)

Bow Hunter Turkey Shoot,  
Talking Trees Campground  
918-653-2187 (Heavener)

Annual Thanksgiving 4-Wheel Drive  
Run 'Gobble Day in the Goo'  
918-647-3510 (Poteau)

### **McCurtain County**

Broken Bow Main Streets  
Munchin N' McCurtain County  
580-584-2440 (Broken Bow)

Beavers Bend Folk Festival & Craft  
Show at Beavers Bend State Park  
580-584-6300 (Broken Bow)

### **Pittsburg County**

Heritage Day Luncheon  
918-423-2550 (McAlester)

Cornerstone Creations Craft Show  
918-426-0138 (McAlester)

Southeast Oklahoma Arts & Crafts  
Show (2 days)  
McAlester 918-423-3939 &  
918-420-3976 (McAlester Tourism)

Kiamichi 18th Annual Quilt Show  
918-423-3061 (McAlester EXPO Center)

### **Pushmataha County**

Deer Rifle Season/Annual/Big Buck  
Contest 580-298-2488 (Antlers)

## **December**

### **Choctaw County**

Handicap Hunt 580-326-3345 (Hugo)

Christmas Parade 580-326-7511 (Hugo)

Lake Raymond Gary Boat Parade  
580-873-2307 (Lake Raymond Gary)

Parade of Homes 580-326-5591 (Hugo)

### **Haskell County**

Christmas Parade  
918-967-8681 (Stigler)

Community Choir Concert  
918-967-8681 (Stigler)

### **LeFlore County**

Christmas Parade & Tree Lighting  
918-653-4303 (Heavener)

Kansas City Southern Christmas Train  
Express 918-653-4303 (Heavener)

Christmas Parade 918-647-9178 (Poteau)

Christmas on the Island  
918-655-7756 (Wister)

Talihina Christmas Parade of Lights,  
918-567-3434 (Talihina)

### **McCurtain County**

Idabel Christmas Parade hosted by  
the Idabel Chamber of Commerce  
580-286-3305 (Idabel)

McCurtain County Christmas Parade  
hosted by the Broken Bow Chamber of  
Commerce 580-584-3393

Downtown Dazzles at  
Christmas/Tree Lighting Ceremony  
hosted by Broken Bow Main Street  
580-584-2440 (Broken Bow)

Valliant Christmas Parade hosted by  
the Valliant Chamber of Commerce  
580-933-5050 (Valliant)

Kings' Kids in the City Park hosted  
by the First Baptist Church (Valliant)

### **Pittsburg County**

Christmas Parade of Lights  
918-423-2550 (McAlester)

Parkway of Lights  
918-420-3976 (McAlester Tourism)

### **Pushmataha County**

Annual Christmas Parade  
580-298-2488 (Antlers)

Christmas Shop at Home Give-away  
580-298-2488 (Antlers)

Ride the Wildhorse Last Chance  
Trail Ride, 918-755-4570 (Nashoba)

for up-to-date  
event information  
visit

[www.kiamichicountry.com](http://www.kiamichicountry.com)



# Information Directory

## Chambers of Commerce & Marketing Associations

*listed in alphabetical order*

Antlers and Pushmataha County Chamber of Commerce  
212 N. High Street  
Antlers, OK 74523  
580-298-2488  
www.antlers-ok.com

Boswell Chamber of Commerce  
P.O. Box 89  
Boswell, OK 74727-0089  
580-566-2226

Broken Bow Chamber of Commerce  
113 W. Martin Luther King Drive  
Broken Bow, OK 74728  
580-584-3393  
www.brokenbowchamber.com

City of Clayton  
P.O. Box 279  
Clayton, OK 74536  
918-569-4135

Hartshorne Chamber of Commerce  
735 W. Penn  
Hartshorne, OK 74547  
918-297-3339

Heavener Chamber of Commerce  
501 W. 1st Street  
Heavener, OK 74937-3000  
918-653-4303  
www.leflorecounty.com/heavener

Southeastern McCurtain County Chamber of Commerce  
P.O. Box 159  
Haworth, OK  
74740-0159  
580-245-2446

Hugo, Oklahoma and Choctaw County Chamber of Commerce  
200 S. Broadway  
Hugo, OK 74743  
580-326-7511  
www.hugo-chamber.com

Idabel Chamber of Commerce  
13 N. Central Avenue  
Idabel, OK 74745-4647  
580-286-3305  
www.idabelchamber.com

McCurtain County Tourism Authority  
c/o  
Broken Bow Chamber of Commerce  
580-584-3393  
800-52-TREES  
www.mccurtaincountygetaways.com

McAlester Chamber of Commerce  
Box 759  
McAlester, OK  
74502-0759  
918-423-2550  
www.mcalester.org

City of McAlester Tourism Department  
P.O. Box 578  
McAlester, OK 74502  
918-420-EXPO

Poteau Chamber of Commerce  
201 S. Broadway  
Poteau, OK 74953-3319  
918-647-9178  
www.poteau.org

Spiro Chamber of Commerce  
Rt 4 Box 52A  
Spiro, OK 74959  
918-962-3816  
www.leflorecounty.com/spiro

Stigler, Oklahoma & Haskell County Chamber of Commerce  
204 E. Main  
Stigler, OK 74462  
918-967-8681  
www.stiglerchamber.com

Talihina Chamber of Commerce  
900 2nd Street, Suite 12  
Talihina, OK 74571  
918-567-3434  
www.talihinacc.com

Valliant Chamber of Commerce  
16 N. Dalton  
Valliant, OK  
918-933-5050

Wilburton, Oklahoma & Latimer County Chamber of Commerce  
302 W. Main Street  
Wilburton, OK 74578-4088  
918-465-2759

Kiamichi Economic Development District of Oklahoma (KEDDO)  
P.O. Box 638  
Wilburton, OK 74578  
918-465-2367  
800-722-8180

## Museums

Old Frisco Depot  
Antlers  
580-298-2488

Beavers Bend Wildlife Museum  
Broken Bow 580-494-6193

Forest Heritage Center  
Beavers Bend Resort Park  
Broken Bow 580-494-6497

Indian Memorial  
Broken Bow 580-584-6531

Gardner Mansion & Museum  
East of Broken Bow 580-584-6588

Ft. Towson Historic Site  
Ft. Towson 580-873-2634

Historical Society  
Fort Towson 580-873-2770

Frisco Museum  
Hugo 580-326-6630

Gene Autry Museum  
Idabel 580-286-3747

Museum of the Red River  
Idabel 580-286-3616

Genealogical & Historical Society  
McAlester  
918-426-0388

Oklahoma State Prison  
McAlester 918-423-4700

Tannehill Museum  
McAlester 918-423-5953

Wheelock Academy  
Millerton 580-746-2139

Kerr Museum  
Poteau 918-647-8221

Haskell County Historical Society  
Stigler 918-967-2161

Open Air Place of Prayer  
Talihina 918-567-3434

Choctaw Tribal Museum  
Tuskahoma 918-569-4465

Lutie Coal Miners Museum  
Wilburton 918-465-2216

## Attractions

*listed by towns*

Old Frisco Depot  
Antlers 580-298-2488

Silver Creek Cabins ATV Trail Rides  
Battiest 580-241-5142

Secluded Acres Retreat  
Packages/Meeting Room  
Broken Bow 817-909-9767

Ambush Adventures (canoeing)  
Broken Bow 580-584-2273

WW Canoe Rental  
Broken Bow 580-584-6856

Your Team Wins Ropes Course  
Broken Bow 817-909-9767

Beavers Bend Depot  
Broken Bow 580-494-6613

Beavers Bend Marina  
Broken Bow 580-494-6455

Beavers Bend White Water Canoe & Kayak Rentals  
Broken Bow 580-584-6594

Hochatown Amusements  
Broken Bow 580-494-6706

Beavers Bend Fly Shop  
Broken Bow 580-494-6071

Choctaw Casinos  
Broken Bow 580-584-5450

# Information Directory

Mostly Memories  
Broken Bow 580-584-5767

Three Rivers Fly Shop  
Broken Bow 580-494-6115

Beavers Bend Wildlife Museum  
Beavers Bend State Park  
Broken Bow 580-494-6193

Forest Heritage Center  
Broken Bow 580-494-6497

Gardner Mansion  
Broken Bow 580-584-6588

Glover River Trail Rides  
Battiest 580-241-5599

Unique Treats & Collectibles  
Broken Bow 580-584-2377

Indian Mounds Trail Rides  
Clayton 918-569-4761

Deer Park  
Heavener 918-653-4303

Rune Stone  
Heavener 580-653-2241

Peter Conser House  
Heavener 918-653-4303

Goodland Home  
Hugo 580-326-7568

Mount Olivet Cemetery  
Hugo 580-326-9263

Barnes-Stevenson House  
Idabel 580-286-6314

Gene Autry Collections  
Idabel 580-286-3747

Old Shawnee Town  
Idabel 580-286-3305

Overstreet-Kerr Farm  
Keota 918-966-3396

Rainbow for Girls Assembly  
McAlester 918-423-1328

Masonic Temple  
McAlester 918-423-6361

EXPO Center  
McAlester 918-420-3976

Wheelock Mission Church &  
Wheelock Academy  
Millerton 580-746-2139

Cavalan Hill  
(World's Highest Hill)  
Poteau 918-647-9178

Kerr Country Mansion  
Poteau 918-647-8221

Spiro Mounds  
Spiro 918-962-2062

Talimena Scenic Drive  
Talihina 918-567-3434

Tamaha Jail  
Tamaha 918-967-8681

Choctaw Chief's House  
Swink 580-873-2301

Horsethief Springs Rec. Area  
Talihina 918-567-3434

Winding Stair Camp Ground  
Talihina 918-567-3434

Garland Cemetery  
Tom 580-933-4344

Tri-Lakes Propeller - Jet Ski/Boat  
Rentals Valliant 580-933-5111

C-Spur Trails Horse Rides)  
Wilburton 918-465-5200

Choctaw Nation Gaming Centers  
Durant 800-788-BINGO  
Idabel 800-MEGA-LUCK  
Pocola 800-590-LUCK  
McAlester 918-423-8161  
Grant 580-346-7862  
Stringtown 580-346-7862  
Broken Bow 580-584-5450

## Lodging & Cabins

*listed by towns*

Oliver's Inn  
Antlers 580-298-3387

Rebel Hill Guest Ranch  
Antlers 580-298-2851

Crooked River Cabins  
Battiest 580-241-5709

East Fork Getaway  
Battiest 580-241-5393

Silver Creek Cabins  
Battiest 580-241-5142

Tree Top View Cabins  
Battiest 580-241-5599

Beavers Bend North Riverfront  
Resort 580-244-3226

Big Cedar Cabins  
Big Cedar 918-651-3271

Broken Bow Lake Cabins  
Broken Bow 580-286-4471

Cabin in the Woods  
Broken Bow 580-286-8684

Contentment Cottages  
Broken Bow 877-590-6454  
888-733-7829

Cozy Cabin  
Hochatown 866-465-2609

Creative Escapes  
Broken Bow 306-2265

Broken Bow Inn  
Broken Bow 580-584-9103  
866-863-3735

Charles Wesley Motor Lodge  
Broken Bow 580-584-3303

Hefner Cabin Rentals  
Broken Bow 580-286-0813

Highway 70 Lodge  
East of Broken Bow 580-584-2460

Island Overlook  
Broken Bow  
580-584-2429 or 580-584-5296

Kiamichi Country Cabins  
Broken Bow 580-494-6152  
888-771-7171

Microtel Inn  
Broken Bow 580-584-7708

Mt. Fork River Front Cabins  
Broken Bow 580-584-2801

Pine Meadow Cabins Hochatown  
580-494-7391 or 888-733-7829

Pine Tree Cabins  
Broken Bow 877-619-6880

Riverbank Cabins  
Broken Bow 580-236-1145

River's Bend Resort  
Broken Bow 580-584-3321

Riverview Retreat  
Broken Bow 580-584-6535

Reuben's Rest Bed & Breakfast  
Broken Bow  
580-584-3155 or 866-817-0108

Twin Pines Cabins  
Broken Bow 580-494-6539

VL Cabins  
Broken Bow 940-665-2840

Wilderness Cabins  
Broken Bow 580-494-5114

Green Country Inn  
Heavener 918-653-2187

Antler Cabin  
West of Broken Bow lake  
214-364-3307

Awesome Escape  
Hochatown  
214-364-3307

Beavers Bend Getaways  
Hochatown  
580-494-6116

Beavers Bend Resort Park  
Hochatown  
1-800-654-8240 or 580-494-6300

Beavers Bend Lakeview Lodge  
Hochatown 800-435-5514

Beavers Bend Resort Park  
Hochatown 800-654-8240

Beavers Bend Wildlife Museum  
& Cabin Rentals  
Hochatown 580-494-6193

Canyon Creek Cabins  
Hochatown  
580-241-7845

# Information Directory

Cedar Creek Resort  
Hochatown 888-93CABIN

Crooked Oak Cabin Rental  
Hochatown 580-494-6201  
or 580-236-0185

Heartpine Hollow Retreats  
Hochatown 580-241-7895

Hickory Hut - Hochatown  
903-796-2231 or 903-244-0873

Hickory Hill Cabins  
Hochatown 580-494-6495

Hidden Hills Cabins  
Hochatown 580-286-9884

Hochatown Hideaways  
Hochatown 405-919-8717

Hochatown Junction  
Hochatown  
580-494-6521 or 1-800-550-6521

Hummingbird Hollow Cabins  
Hochatown 580-420-3320

Lake Pine Retreat Cabins  
Hochatown 580-494-6464

Last Resort Cabins  
Hochatown 888-494-6639

HickoryHill Cabins  
Hochatown 580-494-6495

Hochatown Junction Cabins  
Hochatown 800-550-6521

Hunters Ridge Cabins  
Hochatown 800-561-8779

Pine Meadow Cabins  
Hochatown 580-494-7390/  
888-733-7829

Secluded Acres  
Hochatown 817-909-9767

Secluded Acres RV Park  
Hochatown, OK 580-494-6132

Sleepy Hollow  
Hochatown 580-494-6320

Three Oaks Cabins  
Hochatown 580-494-6144

Timberwolf Cabins  
Hochatown 580-494-6363

Tomichi Cabins  
Hochatown 580-584-7575

Trinity Wilderness Retreat  
Hochatown 580-286-6004

Whip-Poor-Will Cabins  
Hochatown 580-494-6476

Wilderness Lakefront Resort  
Hochatown  
North end of Broken Bow Lake  
580-241-5304

Willow Creek Resort Cabins  
Hochatown 580-494-6091

Talking Trees Campground  
RV spots available)  
Hodgen 918-653-7801

Honobia Country Store & Cabins  
Honobia  
580-244-3433

Honobia Creek  
Honobia 405-521-2730

Heritage Inn  
Hugo 580-326-4846

Village Inn  
Hugo 580-326-3333

Holiday Motel  
Hugo 580-326-6478

The Old Johnson Inn Bed &  
Breakfast  
Hugo 580-326-8111

Hugo Lake Marina Cabins  
Hugo 580-326-0303

Spencer Creek Bed & Breakfast  
Hugo 580-326-7747

Comfort Suites  
Idabel 580-286-9393

Americana Motor Lodge  
Idabel 580-286-6526

Budget Inn  
Idabel 580-286-3394

Comfort Suites of Idabel  
Idabel 580-286-9393

Holiday Inn  
Idabel 580-286-6501

Microtel Inn & Suites  
Idabel 580-286-4466

The Rambler Motel  
Idabel 580-286-3381

Nashoba Valley Golf Course  
and Cabins  
Nashoba 918-755-4519

Cardinal's Nest Cabin  
Pickens 817-431-0716

Ponderosa Cabins  
Pickens 580-241-5453

Pine Creek Lake Camps  
Pine Creek Cove 41 campsites)  
Little River 89 campsites)  
Lost Rapids 30 campsites)  
Turkey Creek 30 campsites)  
West of Broken Bow, OK  
580-933-4239

Black Angus Motel  
Poteau 918-647-3246

Bud's Country Junction RV's  
Poteau 918-647-8147

Days Inn & Suites  
Poteau 918-647-3510

Best Western Traders Inn  
Poteau 918-647-4001/  
888-264-5838

Kerr Country Mansion  
a bed & breakfast)  
Poteau 918-647-8221

A to Z Guest Ranch  
Smithville 580-244-3729

Beavers Bend North  
Riverfront Resort  
Smithville, OK  
580-244-3226

Cedar Valley Cabins  
Smithville 580-244-3242

Eagle Creek Cabins  
Smithville 580-244-7597

Mt. Fork Cabins  
Smithville 580-244-3569

Peckerwood Knob Cabins  
Smithville 580-494-7333

The River's Edge  
Smithville 580-244-7296

Don's Motel  
Stigler  
918-967-4634

Hammons Motel  
Stigler 918-967-4685

Gee's Lakeside Cabins  
Talihina 918-569-4147

Hickory Ridge Cabins  
Talihina 580-584-6002  
or 580-584-1850

Lazy R Inn  
Talihina 918-567-2162

Kiamichi Inn  
Talihina 918-567-2243

Horse Heaven  
Talihina 918-567-4200

Belle Starr Vista Lodge  
Wilburton  
918-465-2562

# Choctaw Nation



Chief Gregory E. Pyle

# Welcome!



Assistant Chief Mike Bailey



Hap Ward



Charlotte Jackson



Ted Dosh



Mike Amos



Joe Coley



Anthony Dillard



Kenny Bryant



Jack Austin



Bob Pate



Delton Cox



Perry Thompson



James Frazier

# Choctaw Nation Health Services



*"Best Rural Health Care In America"*

## **Hospital Services:**

- Hearing Clinic
- Behavioral Health
- Dental
- Diabetes Wellness Center
- Emergency Room
- Family Practice
- Laboratory
- Nutrition
- Optometry
- Orthopedics
- Pediatrics
- Physical Therapy
- Podiatry
- Radiology
- Respiratory Therapy
- Speech Therapy
- Women's Health/OB



## **Inpatient Services:**

- 37 Private Rooms
- Medical/ Surgical
- Obstetrics & Gynecology
- Pediatrics
- Surgery

## **Emergency & Urgent Care**

Open 24 hours  
7 days a week  
One Choctaw Way  
Talihina, Ok 74571  
800-349-7026  
918-567-7000



## **Idabel Clinic Services:**

- Dental
- Optometry
- Internal Medicine
- Family Practice
- Laboratory
- Radiology
- Pediatrics
- Pharmacy
- Physical Therapy

- Choctaw Nation Health Care Center-Talihina(800) 349-7026 or (918) 567-7000
- Diabetes Wellness Center-Talihina (800) 349-7026 or (918) 567-7000
- Choctaw Nation Health Clinics located in:
  - Poteau (918) 649-1100, McAlester (918) 423-8440, Hugo (580) 326-7561
  - Broken Bow (580) 584-2740, Idabel (580) 286-2600, Stigler (918) 967-9200

*To be eligible for our health care services, you must have a certificate degree of Indian blood (CDIB Card) from a Federally recognized tribe.*

# CHOCTAW

*Indian*

## Atoka Travel Mart

1302 S. Mississippi  
Atoka, OK 74525

## Idabel

1455 SE Washington  
Idabel, OK 74745

## Broken Bow

1800 S. Park Drive  
Broken Bow, OK 74728

## McAlester

1640 S. George Nigh  
McAlester, OK 74501

## Durant East

4015 Choctaw Road  
Durant, OK 74701

## Pocola

3402 "A" Service Road  
P.O. Box 9  
Pocola, OK 74901

## Durant West

4169 Choctaw Road  
Calera, OK 74730

## Poteau

4105 N. Broadway  
Poteau, OK 74953

## Garvin

Rt. 1 Box 88, Hwy 37W  
Garvin, OK 74736

## Stringtown

897 N. Hwy 69  
Stringtown, OK 74539

## Heavener

505 North HWY 59  
Heavener, OK 74937

## Wilburton

902 W. Main  
Wilburton, OK 74578

## Hugo

Rt. 1 Box 17  
Hugo, OK 74738



# Travel Plazas Smoke Shops

**Open 24 Hours a Day • 7 Days a Week**

# CHOCTAW Casino

BLUE RIBBON DOWNS  
Racino



WE HAVE THE GAMES  
YOU LOVE TO PLAY!



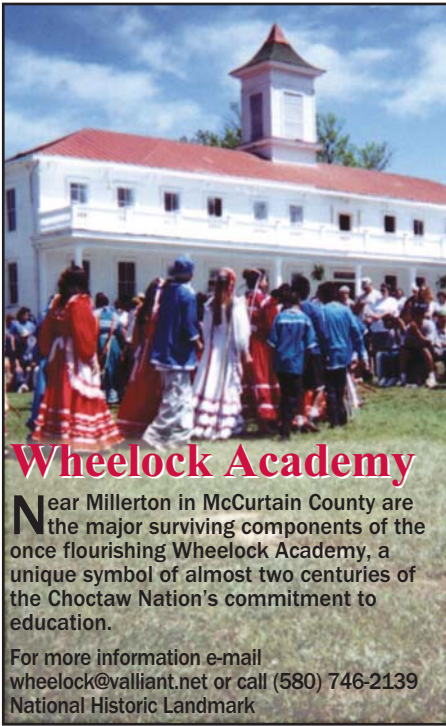
Visit All Of Our LUCKY Locations:

Blue Ribbon Downs - Racino

- Broken Bow • Durant • Grant • Idabel
- McAlester • Pocola • Stringtown



[www.choctawcasinos.com](http://www.choctawcasinos.com)



## Wheelock Academy

Near Millerton in McCurtain County are the major surviving components of the once flourishing Wheelock Academy, a unique symbol of almost two centuries of the Choctaw Nation's commitment to education.

For more information e-mail  
[wheelock@valiant.net](mailto:wheelock@valiant.net) or call (580) 746-2139  
 National Historic Landmark



## *The Choctaw Capitol is on the National Registry of Historic Places*

Open Monday-Friday, 8 a.m.-4 p.m.

Closed Holidays

Admission free

Guided Tours Available  
 upon request

### Choctaw Nation

HC 64, Box 3270

Tushka Homma, OK

Tele/Fax 918-569-4465



# Frisco Depot Museum

RV  
 PARK



FEATURING  
*Harvey  
 House*  
 Restaurant

Located Hwy 70. Railroad Crossing - Hugo, OK

Visit Historic Museum, Dine in the Original Harvey House Restaurant  
 Tour Historic County Sites including  
 The Civil War Cannon, Circus Elephant Farm, Historic Cemetary,  
 Walk the Trail of Tears & Doaksville

RV Park available, Meeting Room/Showers  
 Reservations/Brochures 580-326-6630 - Harvey House Restuarant 580-326-8287